
BuzziSkin Printed Product Specification Sheet

This document contains technical
information about the BuzziSkin Printed



www.buzzi.space

Design your wall with BuzziSkin Printed


Customize your wall with our new BuzziSkin Printed while enhancing your room acoustics at the same time. BuzziSkin Printed is ideal to absorb the high tones in your room.

Are you looking for a sophisticated look that will add a unique feel to your interior?


Go for our Marble Absynth or Marble Emperador print. If you prefer an urban, industrial look we propose our Concrete print or bring nature inside with our two different Green prints or our Jungle print.


Design by Sas Adriaenssens

General


 BuzziSkin Printed Concrete, Green 1, Green 2, Jungle, Marble Absynth, Marble Emperador

 Front: BuzziSkin Printed
Back: Self-adhesive

 Roll: 10 m x 0,98 m | 393.70" x 38.58"
Thickness: 6 mm + 0,1 mm self-adhesive | 0.24" + 0.04" self-adhesive

 1000g/m² | 29.49oz/yd²

We do not recommend installing BuzziSkin Printed on the ceiling or the floor. BuzziSkin Printed is not suitable as seating surface because it will become fluffy.

 Treat the surface with water-based primer before applying BuzziSkin Printed for optimal adhesion results. BuzziSkin Printed can not be applied on vinyl or any other plasticized surface. No claims concerning deviation in color, size, and thickness can be accepted. Because of the nature of the product this can variate. The risk is more likely in different batches.

Acoustics



Absorption

Content

Configurations	3
Fabrics	4
Dimensions	5
Acoustics	6

Configurations

BuzziSkin Printed



Front: BuzziSkin Printed
Back: Self-adhesive

Roll: L 10 m W 0,98 m | L 393.70" W 38.58"

Thickness: 6 mm + 0,1 mm self-adhesive

0.24" + 0.04" self-adhesive

Repeat artwork: Concrete ± 480 cm | 189"

Green 1 ± 250 cm | 98.43"

Green 2 ± 250 cm | 98.43"

Jungle ± 750 cm | 295.28"

Marble Absynth ± 480 cm | 189"

Marble Emperador ± 480 cm | 189"



Batch to batch variation in repeat artwork length of 1-2% may occur.



1000g/m² | 29.49oz/yd²

We do not recommend installing BuzziSkin Printed on the ceiling or the floor.

BuzziSkin Printed is not suitable as seating surface because it will become fluffy.

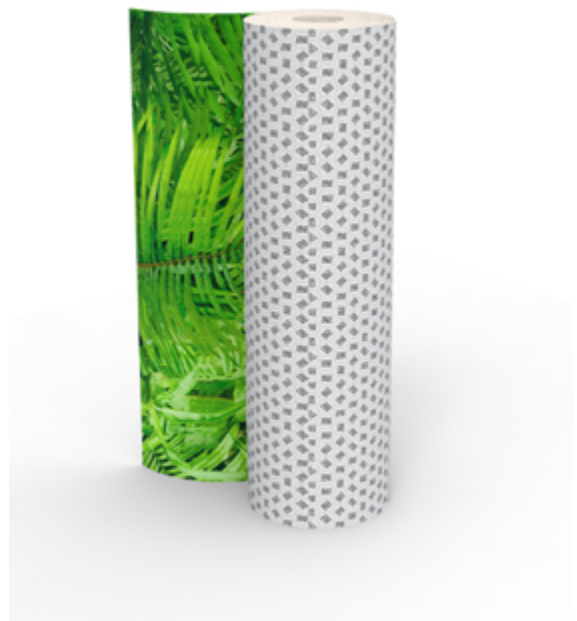
Treat the surface with water-based primer before applying BuzziSkin Printed for optimal adhesion results.



BuzziSkin Printed can not be applied on vinyl or any other plasticized surface.

No claims concerning deviation in color, size, and thickness can be accepted.

Because of the nature of the product this can variate. The risk is more likely in different batches.



Fabrics

Skin

Composition 100% Recycled P.E.T. Felt + adhesive backing

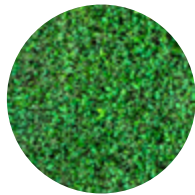
Weight 1.000 g/m² | 29.49 oz/yd²

Abrasion resistance >7.000 Martindale

Flammability EU: EN 13501.1: 2013 Class C-s2, d0



Concrete



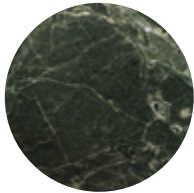
Green 1



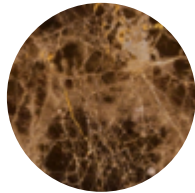
Green 2



Jungle



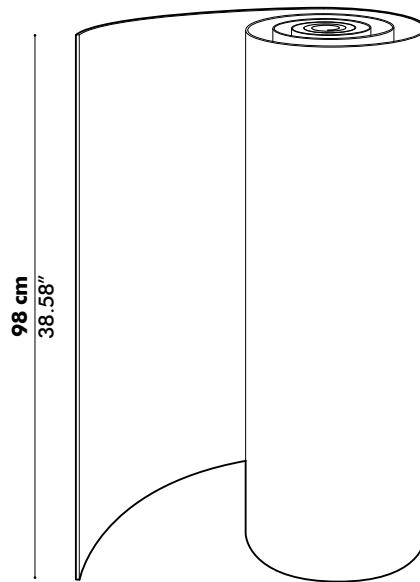
Marble Absynth



Marble Emperador

Dimensions

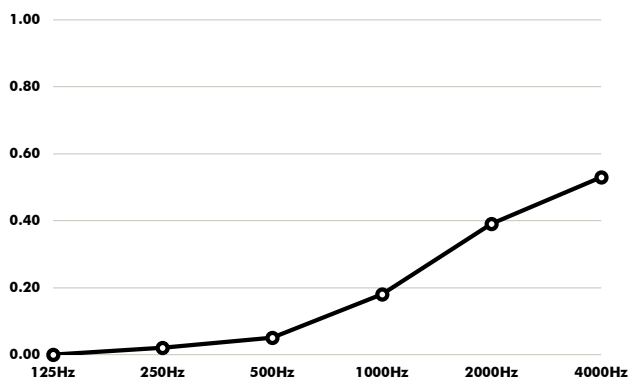
Length: 10 m | 393.70"
Thickness: 6 mm | 0.24"



Acoustics

BuzziSkin Printed

Absorption coefficient



Hz	α^s
125	0.00
250	0.02
500	0.05
1000	0.18
2000	0.39
4000	0.53

Absorption Values

α_w
(ISO 11654) **0.15**

NRC
(ASTM - C423) **0.20**

SAA
(ASTM-C423) **0.21**

Class
(ISO 11654) **E**

Glossary

All calculations are based on accredited lab measurements, official document available on Buzzi.Space

Definitions

α	Weighted absorption coefficient	(ISO 11654)
NRC	Noise reduction coefficient	(ASTM - C423)
SAA	Sound absorption average	(ASTM - C423)

Classification of sound absorbers NEN-EN-ISO 11654

A	0.90 0.95 1.0
B	0.80 0.85
C	0.60 0.65 0.70 0.75
D	0.03 0.55
E	0.15 0.25