



Suitable Applications:



OPEN OFFICES



RESTAURANTS



ATRIUMS



SCHOOLS & COLLEGES



RECEPTION AREAS



CONFERENCE CENTRES



CORRIDORS



GYMS



PUBS & BARS



SHOWROOMS

Please note, MuffleStretch are not designed to be used in swimming pools or outdoors environments.

MuffleStretch is a high quality sound absorbing stretched fabric system. The system is designed as an acoustic wall lining to reduce the reverberation in areas with hard surfaces. MuffleStretch can improve the quality of a space due to the product's ability to absorb sound and is designed with a fabric finish available in a vast range of colours.

Advantages:

- Outstanding sound absorption performance - upto Class A
- Large variety of colours and customisation available
- High content of recyclable material
- Water repellent properties available
- Fast Lead Times
- Flexible installation around TV's, doors etc.



What is MuffleStretch

MuffleStretch is a stretched fabric system which performs on several fronts. Not only is this the ideal solution for spaces where there is a reverberation problem but with a large selection of fabric colours to choose from, this product also offers a level of decoration by injecting colour and texture to your desired setting; with the option for a seam free full wall covering.

MuffleStretch is extensively used in schools, offices, restaurants, studios, sports and community halls and meeting rooms.

MuffleStretch can be manufactured in customised sizes to meet all your requirements. We offer a wide variety of fabric colours which come in both standard and superior fabric finishes. Clients are able to select a fabric of their own choice. Should this be the chosen option a small sample of the fabric would be required to check suitability.



Cutting

MuffleStretch can be cut with a sharp stanley knife or textile scissors.



Cleaning

Light dirt marks may be removed by using a proprietary carpet spot cleaner. A small area should be tested before doing the rest of the area to ensure that the fabric is not adversely affected.



Density

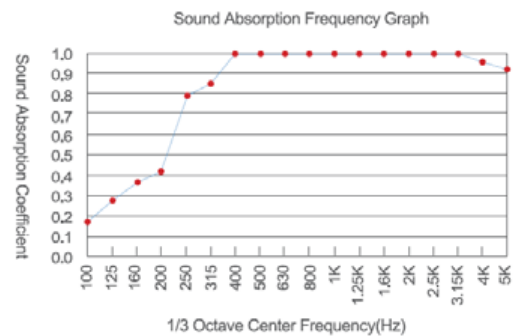
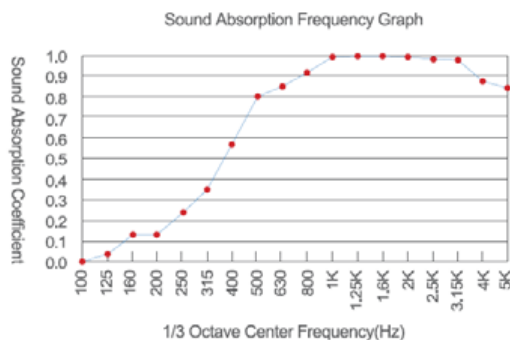
SAC using 25mm thick fibreglass insulation of density 96kg/m³
SAC using 55mm thick fibreglass insulation of density 64kg/m³
Thickness: 2mm



Fire

MuffleStretch has been tested at EN 13501-1 = Class B s1, d0

Technical and Acoustic Performance



Installation



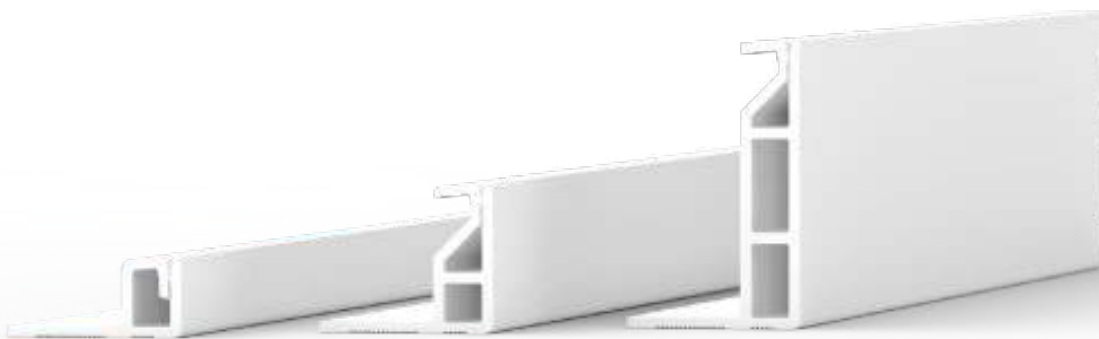
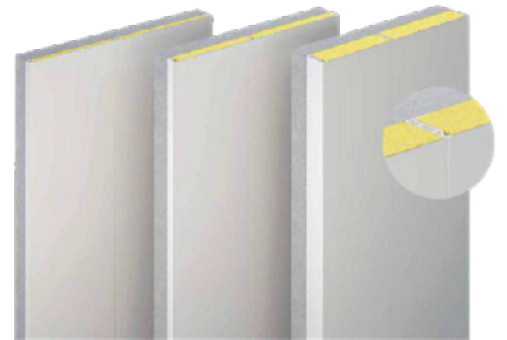
Apply adhesive onto the bottom surface of the tracks and screw or nail them onto the wall. Mitre cut the ends of the tracks that meet adjacent tracks at an angle.



Install mineral infill or acoustic foam within the areas encased by the tracks. Secure the infill or foam with screws, spindle pins, or adhesives.



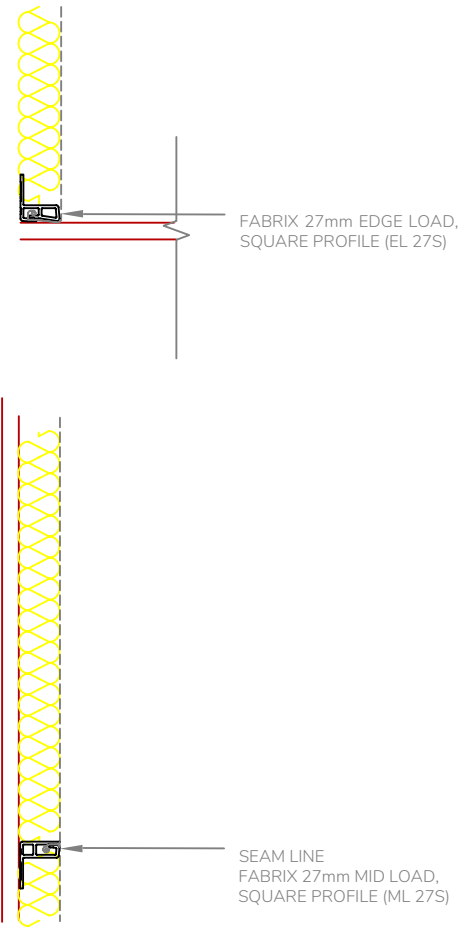
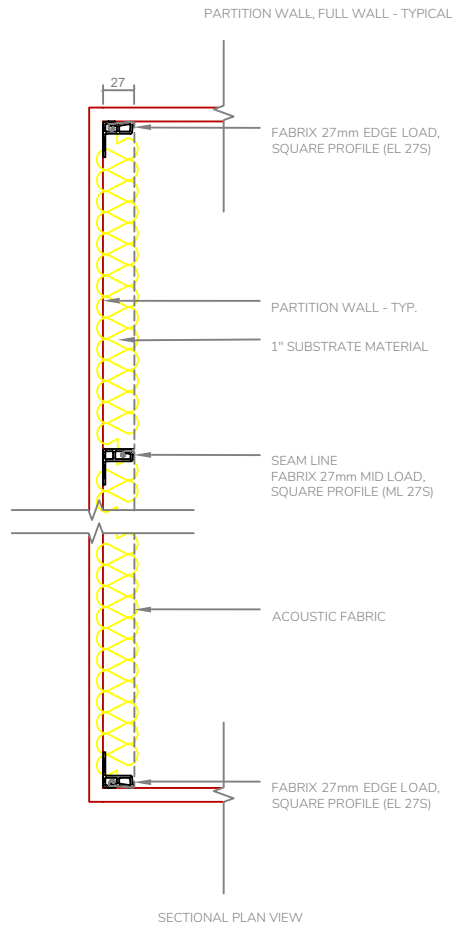
Install the fabric into the teeth of the track with a mallet and putty knife. Trim off the excess fabric and tuck in any loose fabric or thread.



ML 15S

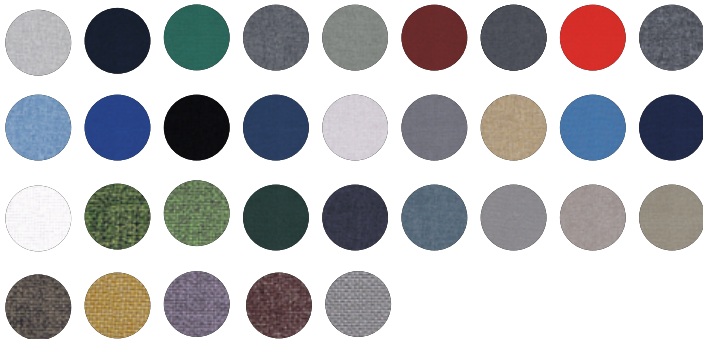
ML 27S

ML 53S



Colours and Fabric

MuffleStretch are available in a range of colours in the Lucia and Cara swatches.



Swatches are a sample of some of the colours available.

Product Specification

Delivery, Storage & Handling

Protect MuffleStretch from excessive moisture when storing and handling

Installation

Install MuffleStretch in locations indicated. Comply with manufacturers written instructions for installation of panels using type of fixing accessories indicated

Supplier

-  www.muffle.co.uk
-  info@muffle.co.uk
-  01924 938 911

Note: Product MUST be checked for colour shading differences, flaws, defects or damage prior to installation. Once installation has been commenced, the products are deemed to have arrived in perfect condition - any of the above reported after installation will not be covered by your warranty.