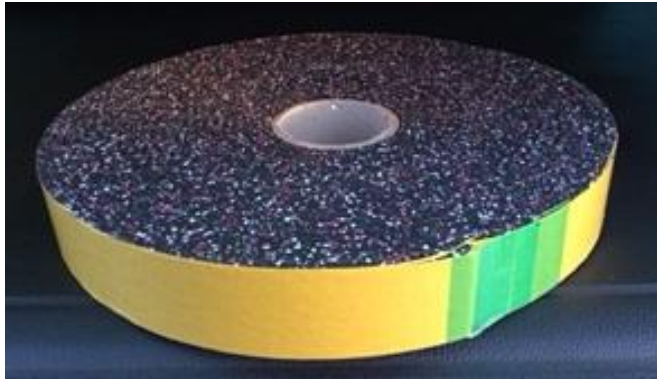


TECHNICAL INFORMATION SHEET

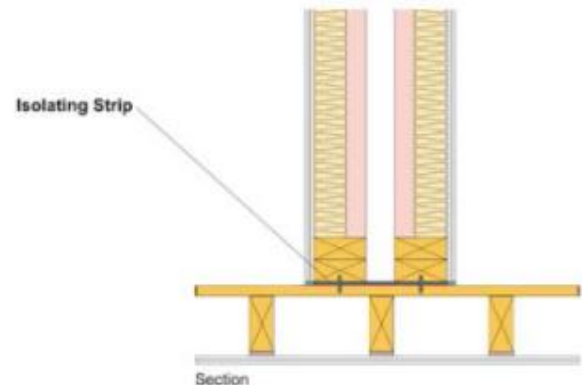
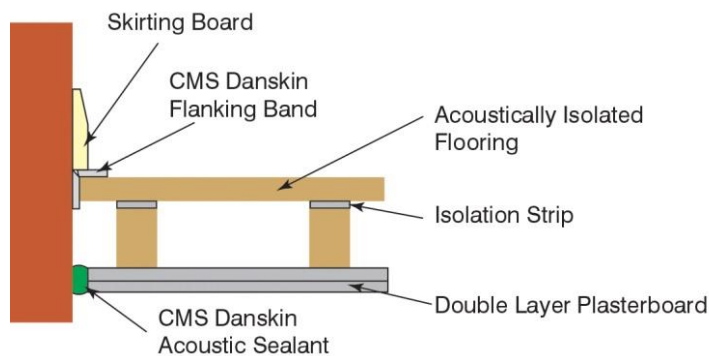


Karma Isolation Strips are acoustic isolating strips that are designed to sit beneath all types of wall partitions and on top of timber joists to provide a very simple and effective way to reduce structure borne noise. The strips can be tailored to fit all partition and joist widths creating solution for all eventualities.



Typical Applications used in refurbishment projects, to isolate the partition/floating floor from the sub-base/joists below. In particular, houses, flats, offices, shops, hotels and nursing homes.

INSTALLATION EXAMPLES



Benefits of Karma Isolation Strips

- Standard thickness of 6mm
- Offers long term performance without collapse or "bottoming" out under high point loads
- Resistant to ageing and deformation
- Quick & easy to install – simply adhere to the subfloor/joist
- Minimises construction heights
- High quality and exact materials thickness guaranteed
- Accreditation to ISO9001, ISO 14001 and ISO 1801
- 100% recyclable

Physical Information

- Roll Dimensions: 15m x (100mm x 75mm x 50mm) x 6mm (Self Adhesive backed)
- Other widths are available on request

Accessories

- GWP = 0 – Global Warming Potential of resilient layer
- Recycled – Product made recycled or recyclable materials