
CAT A **Fabric**

NO BOUNDARIES



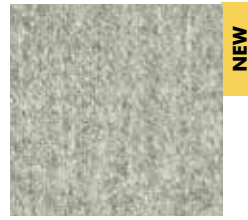
Fabric



FA-Camel 1056



FA-Kiezel 7



FA-Silver 57



FA-Ivory 101



FA-Naturel 1



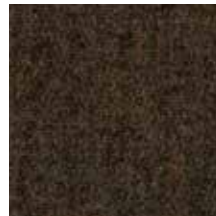
FA-Beige 1037



FA-Dolphin 180



FA-Shitake 124



FA-DarkBrown 18



FA-Rust 29



FA-Taupe 1008



FA-Navy 1007



FA-Azure 144



FA-Olive 53



FA-Army 14



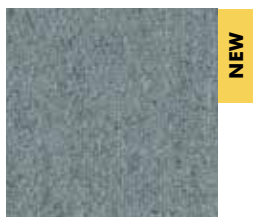
FA-Zwart 1003



FA-MidGrey 1001



FA-LightGrey 1000



FA-Electric 16



FA-Red 2011

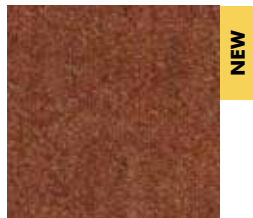


FA-Fire 139

Fabric



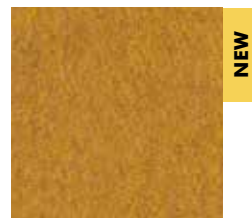
FA-Orange 2012



FA-Autumn 33



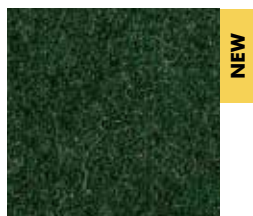
FA-Mandarin 129



FA-Mustard 63



FA-Yellow 24



FA-Bottle 61



FA-Purple 78



FA-Aubergine 74



FA-Pink 73



FA-Prune 76



FA-Fuchsia 77



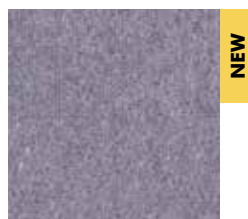
FA-Violet 72



FA-Blue 45



FA-Indigo 90



FA-Lila 39



FA-Petrol 56



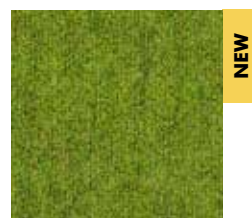
FA-Aqua 143



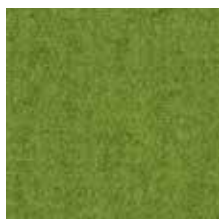
FA-OceanBlue 147



FA-LightBlue 41



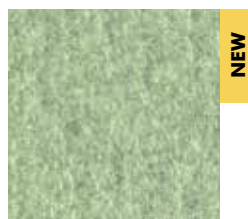
FA-Grass 59



FA-Pistache 52



FA-Mint 50



FA-Jade 42

CAT A Fabric

Specifications

Composition 70% Recycled Wool, 25% Recycled Polyacryl,
5% Recycled Other Fabrics

Weight 405 g/m² | 11.94 oz/yd²

Width 148 cm | 58.27"

Thickness 0,8 mm | 0.031 inch

Abrasion resistance 40.000 Martindale, 50.000 Wyzenbeek

Flammability EU: EN 1021.1/2006 | BS EN 1021.1/2006 (cigarette)
EN 1021.2/2006 | BS EN 1021.2/2006 (match)

USA: CAL TB 117 | ASTM E84 CLASS A

Fastness to light EU: 4 | USA: 4

Fastness to rubbing EU: Wet 3-4 | Dry 4-5

Fastness to crocking USA: Wet 5 | Dry 5



Maintenance

Vacuum clean regularly. Don't wash. Don't remove the Fabric from the product.

Treat spillages immediately. Professional dry clean or wipe clean with a pH neutral soap and a damp cloth.

