
CAT A **Trevira CS⁺ | Trevira CS**

NO BOUNDARIES



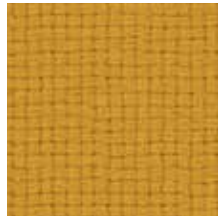
Trevira CS



TRCS Yellow 3008



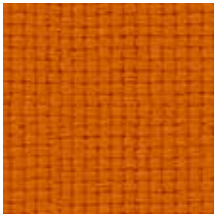
TRCS Hazy Yellow 9309



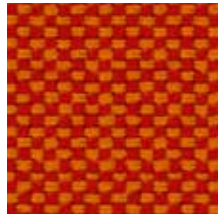
TRCS Mustard 3019



TRCS Mocca 1029



TRCS Orange 4030



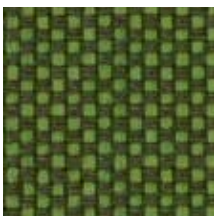
TRCS Hazy Orange 9404



TRCS Red 4027



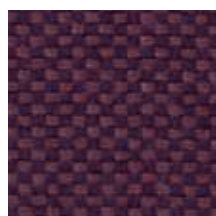
TRCS Berry 4017



TRCS Hazy Jade 9703



TRCS Jade 7020



TRCS Fig 9503



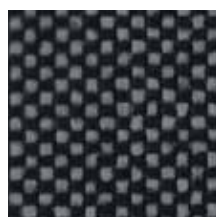
TRCS Hazy Purple 9501



TRCS Sand 9212



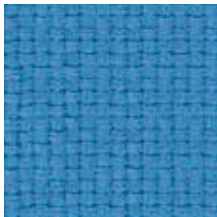
TRCS Hazy Clay 9217



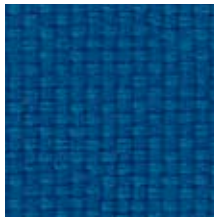
TRCS Grey Black 9803



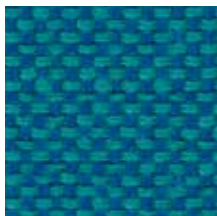
TRCS Black 8033



TRCS Lavender 6006



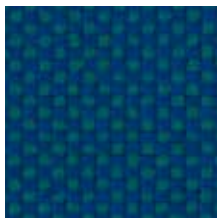
TRCS Blue 6075



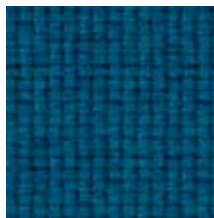
TRCS Hazy Blue 9601



TRCS Blue Black 9603



TRCS Hazy Petrol 9602

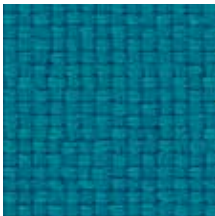


TRCS Petrol 6014

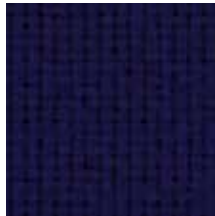
Trevira CS+



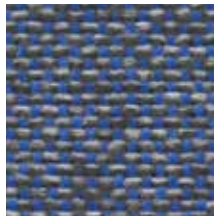
TRCS+ LightBlue 9681



TRCS+ Ocean 6091



TRCS+ Indigo 6080



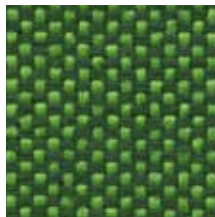
TRCS+ SkyBlue 9683



TRCS+ IceBlue 9680



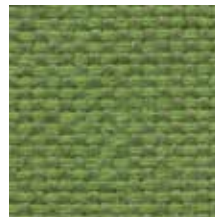
TRCS+ Hazy Green 9704



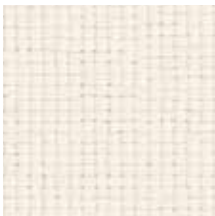
TRCS+ Olive 9770



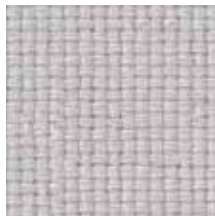
TRCS+ Hazy Pistache 9702



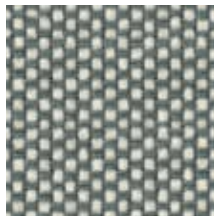
TRCS+ Lime 9741



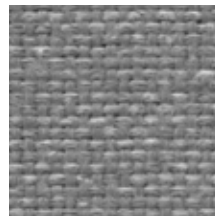
TRCS+ White 9106



TRCS+ Cloud 8001



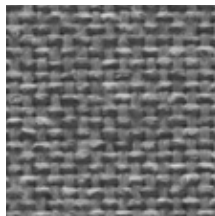
TRCS+ Hazy Grey 9107



TRCS+ Ash 9882



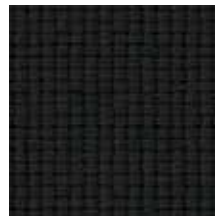
TRCS+ Grey 8009



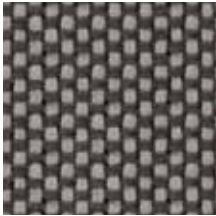
TRCS+ Dolphin 9881



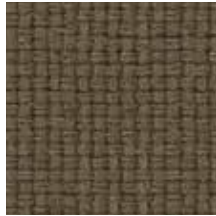
TRCS+ Charcoal 9880



TRCS+ Anthracite 9805



TRCS+ Rock 9804



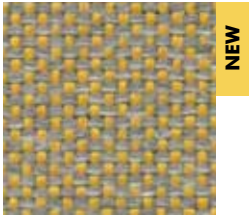
TRCS+ Clay 2006



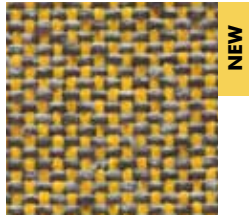
TRCS+ Hazy Greige 9211



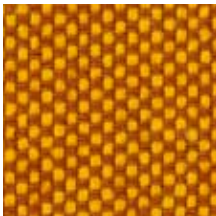
TRCS+ Greige 1006



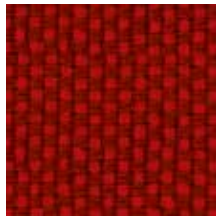
TRCS+ Champagne 9381



TRCS+ Taffy 9380



TRCS+ Hazy Mocca 9302



TRCS+ Hazy Red 9405

CAT A Trevira CS⁺ | Trevira CS

Specifications

Composition 100% Polyester, Trevira CS

Weight 420 g/m² | 12.39 oz/yd²

Width Trevira CS⁺ 150 cm | 59.06" - Trevira CS 140 cm | 55.12"

Abrasion resistance 100.000 Martindale, 90.000 Wyzenbeek

Flammability EU: BS 5852 part II: CRIB 5 | BS 7176 Medium Hazard
M1 | B1 | C1 | EN 1021/1-2 | IMO Res. A652 (16)
USA: CAL TB 117

Fastness to light EU: 6 | USA: 5

Fastness to rubbing EU: Wet 4-5 | Dry 4-5

Fastness to crocking USA: Wet 5 | Dry 5

Match Weight ±5% | Width ±2%



Maintenance

Vacuum clean regularly. Don't remove the Trevira CS⁺ | Trevira CS from the product. Treat spillages immediately. Professional dry clean or wipe clean with a pH neutral soap and a damp cloth.

