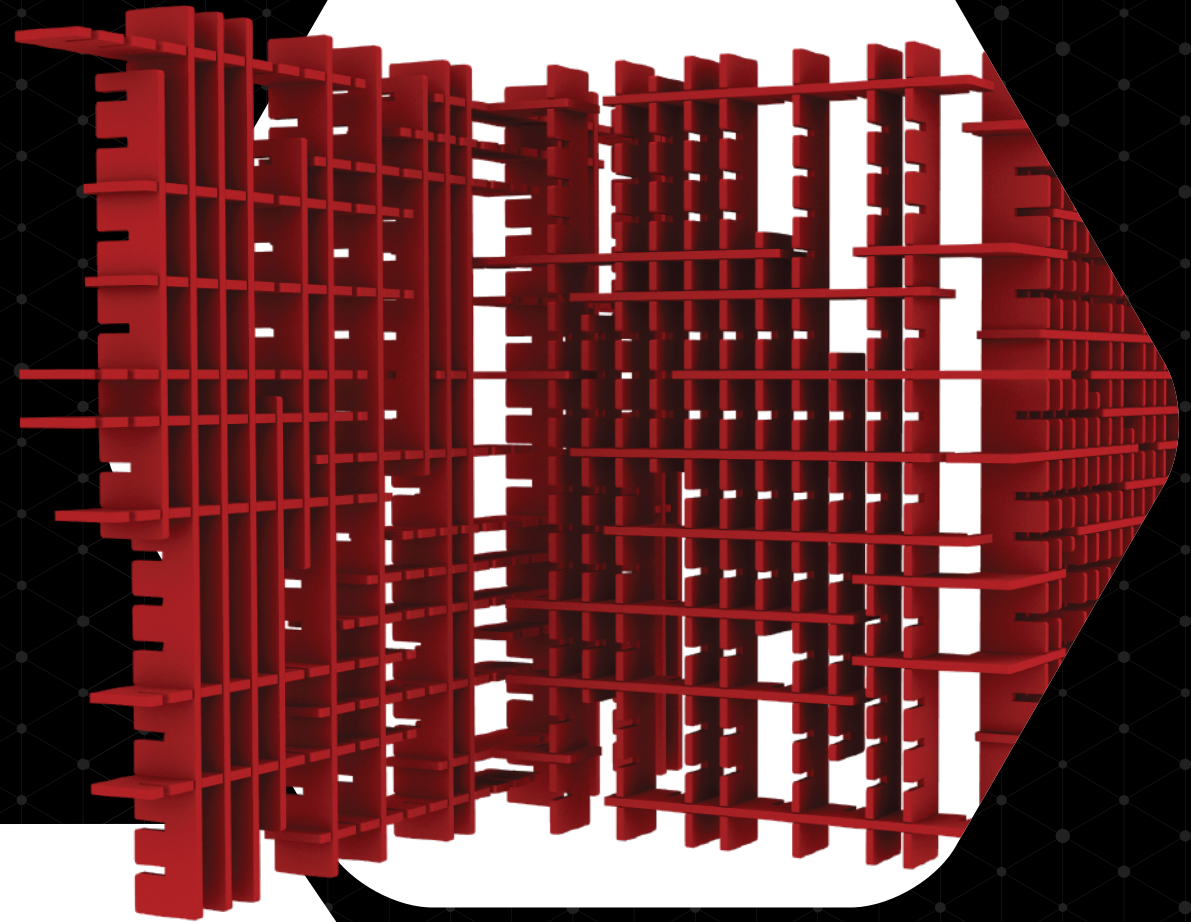


# GROOVE

ASSEMBLY INSTRUCTIONS



1Six8

Designers of acoustic and **environmentally sustainable** office solutions

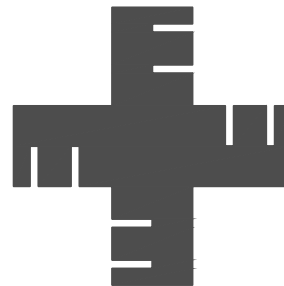
# GROOVE

## ASSEMBLY INSTRUCTIONS

## COMPONENTS



90 degree junction connector



360 degree junction connector



Secondary strut



Main strut

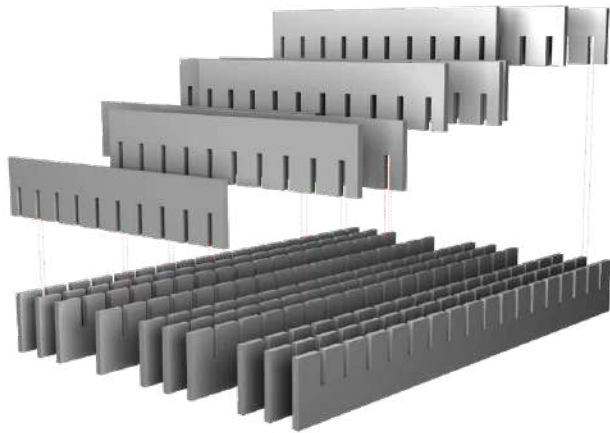


180 degree junction connector

# GROOVE

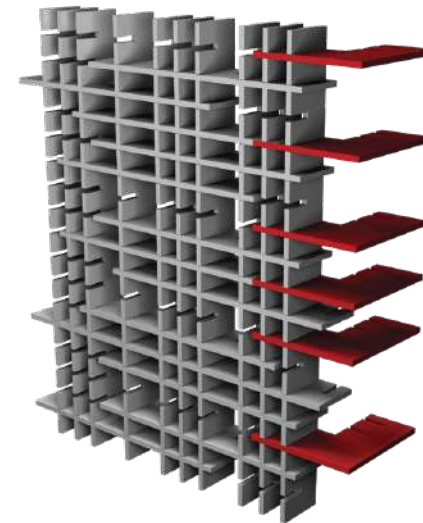
## ASSEMBLY INSTRUCTIONS

### STEP 1



- Lay a group of main struts on the floor and insert secondary struts as per required design to form first wall.
- Main struts can be spaced out as desired with gaps or no gaps between each other. There is an element of creative freedom depending on how dense you want the system.
- Secondary struts can also be inserted with an element of creative freedom to create a staggered or uniform lattice work.

### STEP 2

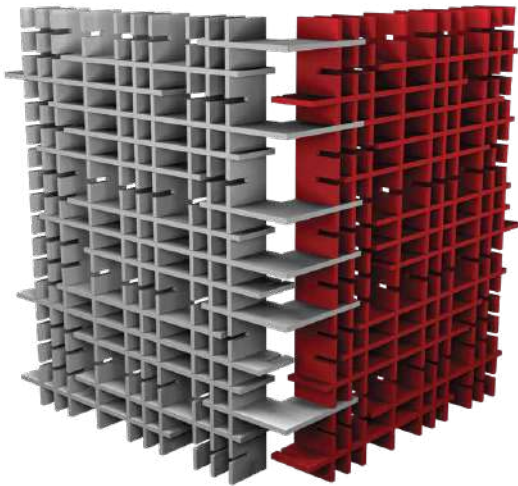


- Position the first wall upright and insert junction connectors. Either 90 / 180 / 360 degree depending on desired layout.
- NOTE: The system has to have at least one change of direction, preferably 2 to create stability as it is a free standing system.

# GROOVE

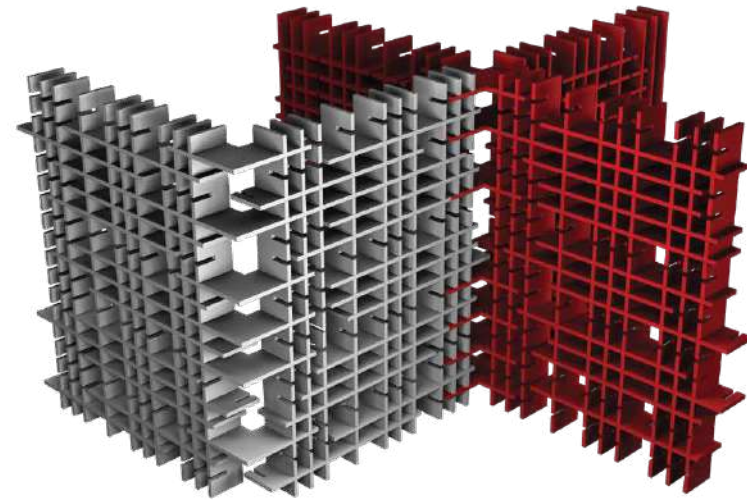
## ASSEMBLY INSTRUCTIONS

### STEP 3



- Create and insert a second wall to your junction connectors.

### STEP 4

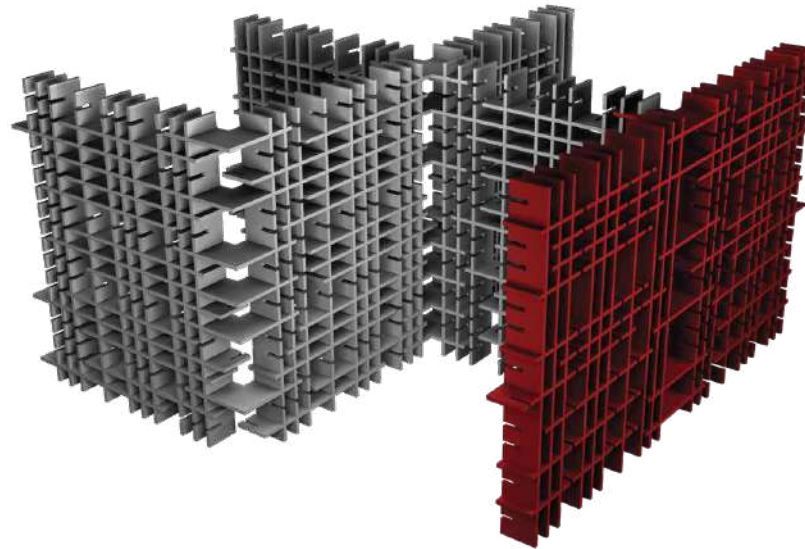


- Continue to build your desired layout using additional walls and junction connectors to change direction as seen in step 4 and 5.

# GROOVE

## ASSEMBLY INSTRUCTIONS

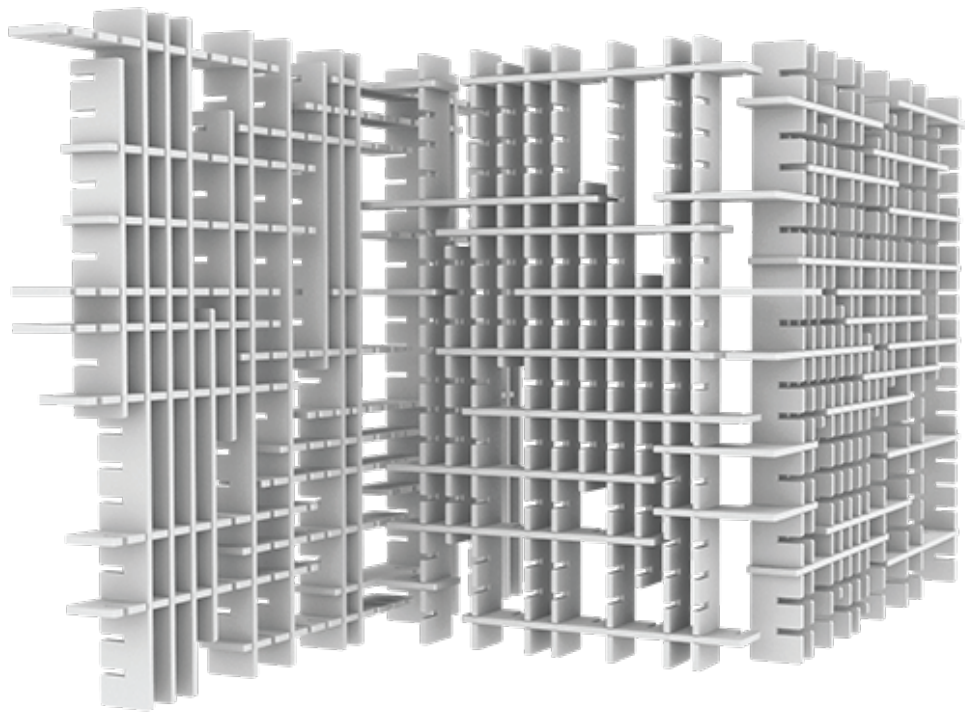
### STEP 5



- Build up your main structure.
- You can always go back to any wall and insert or remove main and secondary struts to create more or less density or alter the lattice pattern.
- You can use both main and secondary struts either horizontally or vertically to create interesting geometric patterns.

# GROOVE

## ASSEMBLY INSTRUCTIONS



### Sheet Thickness

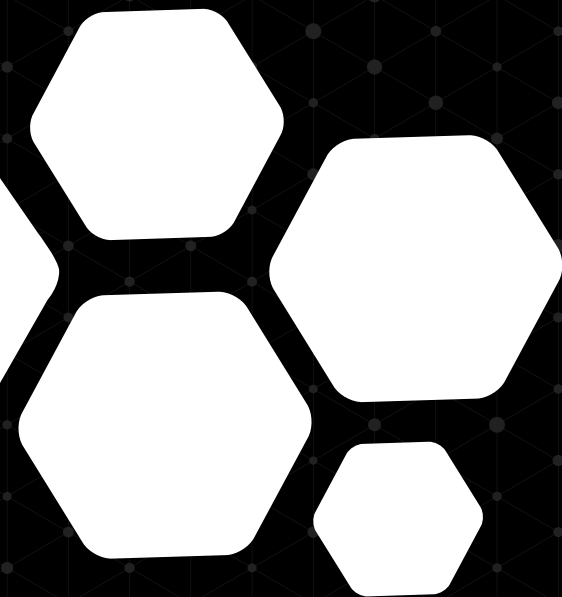
24mm

### Dimensions

2058mm (h) x 240mm (w) - Main strut

1156mm (h) x 240mm (w) - Secondary strut

# 14six8



## Telephone

Francois: +44 7305 349443

Daniel: +27 82 331 8319

## Email

[studio@14six8.com](mailto:studio@14six8.com)

## Website

[www.14six8.com](http://www.14six8.com)

## Address

71-75, Shelton Street, Covent Garden,  
London, WC2H 9JQ, United Kingdom

# GROOVE

ASSEMBLY INSTRUCTIONS