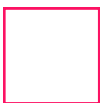




## Styles



Square



Circle



Rectangle

## MuffleWall

**MuffleWall** is a high-quality sound absorbing panel designed to control reverberation and absorb excess sound. This acoustic panel is ideal for installing in environments such as offices that feature multiple hard surfaces. Designed with a fabric finish available in a wide range of colours and 3 styles, this panel will suit the design of almost any environment it's installed into.

### Advantages:

- High-performance sound absorption
- Controls reverberation and reduces echo
- Available in multiple fabric colours
- Easy to install

# Product Specifications

MuffleWall is a fabric wrapped acoustic panel ideal for reducing reverberation and echo. Due to its large selection of available fabric colours, it will work with the aesthetics of almost any interior design.

## Fire

MuffleWall core board has been tested and offers Class O fire rating to BS476: Part 6. Fabric facing complies with Class 1 to BS476: Part 7. Class O fabrics can be supplied on request

## Weight

MuffleWall 25mm panels weigh 3.5kg/m<sup>2</sup>

MuffleWall 40mm panels weigh 4.5kg/m<sup>2</sup>

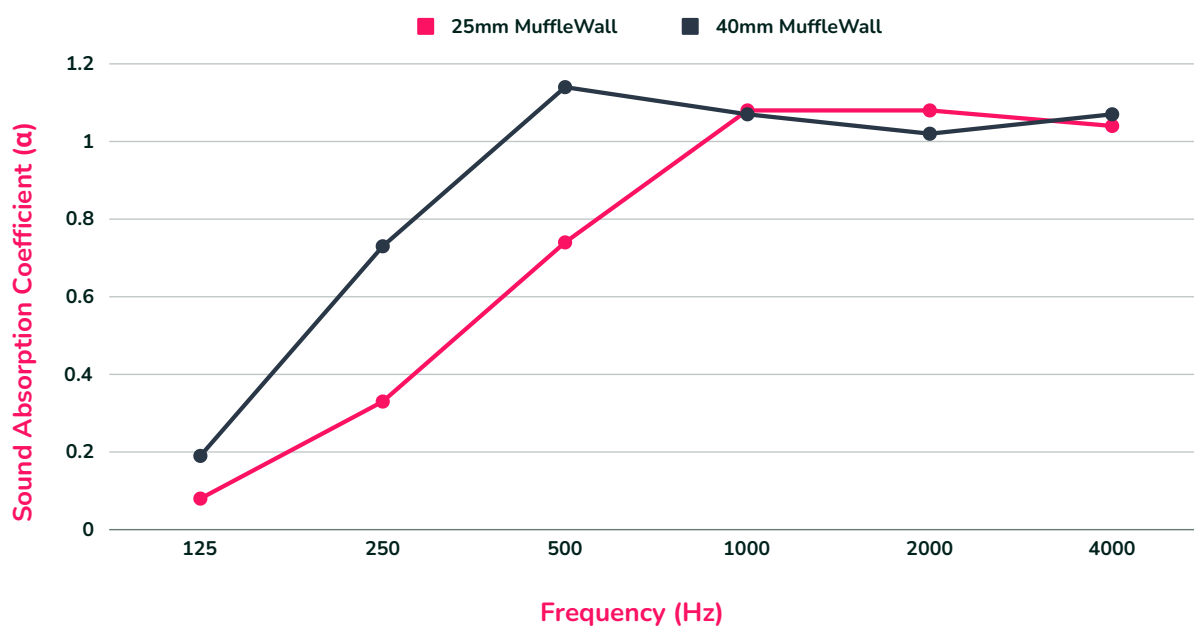
Please note: All weights are given as approxiamations

## Acoustic Performance

MuffleWall is made from a high performing glass wool.

**MuffleWall Sound Absorption | Up to 'Class A'**

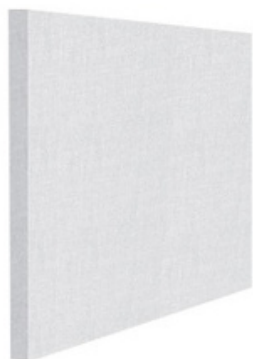
**Noise Reduction Coefficient | 0.80-1.00**



MuffleWall Absorption Coefficient Table								
Frequency (Hz)	125	250	500	1000	2000	4000	NRC	Absorption Class
25mm MuffleWall	0.08	0.33	0.74	1.08	1.08	1.04	0.80	C
40mm MuffleWall	0.19	0.73	1.14	1.07	1.02	1.07	1.00	A

# Product Dimensions

MuffleWall is available in a several sizes and in 3 standard shapes – rectangle, circle, and square. The panel can be customised in shape and size to meet your requirements. For custom requests, please speak to a member of the sales team.



## Square

- 600 x 600 x 40 (mm)
- 1200 x 1200 x 40 (mm)
- 600 x 600 x 25 (mm)
- 1200 x 1200 x 25 (mm)



## Rectangle

- 1200 x 2100 x 40 (mm)
- 1200 x 2700 x 40 (mm)
- 1200 x 600 x 40 (mm)
- 1200 x 1500 x 40 (mm)
- 1200 x 1800 x 40 (mm)
- 1200 x 2400 x 40 (mm)
- 1200 x 900 x 25 (mm)
- 1200 x 1500 x 25 (mm)
- 1200 x 1800 x 25 (mm)
- 1200 x 2100 x 25 (mm)
- 1200 x 2400 x 25 (mm)
- 1200 x 2700 x 25 (mm)



## Circle

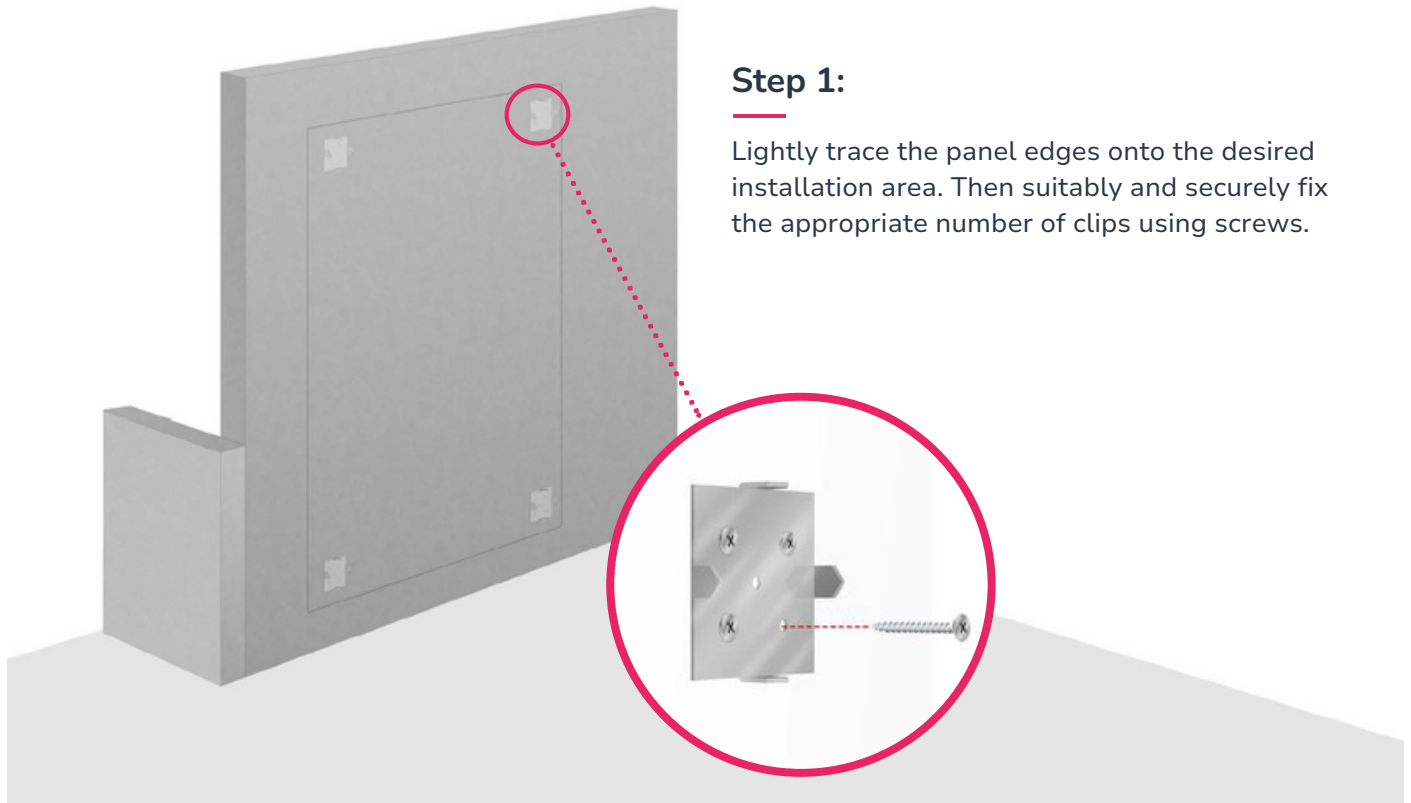
- Ø 800 x 40 (mm)
- Ø 1000 x 40 (mm)
- Ø 1200 x 40 (mm)
- Ø 800 x 25(mm)
- Ø 1000 x 25(mm)
- Ø 1200 x 25(mm)



# Installation

## Method 2

MuffleWall is designed for easy installation with 3 simple steps. Before installation, ensure the surface intended for application is completely clean and dry. Panels can be applied to most surfaces including concrete, plasterboard, and block work providing they are solid. At the site of application, wallpaper should be removed, gloss paint should be roughened, and emulsion paint needs to be brushed with a stiff brush.

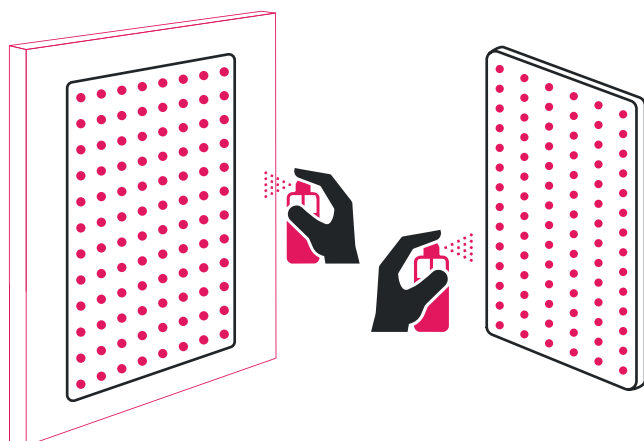


### Step 1:

Lightly trace the panel edges onto the desired installation area. Then suitably and securely fix the appropriate number of clips using screws.

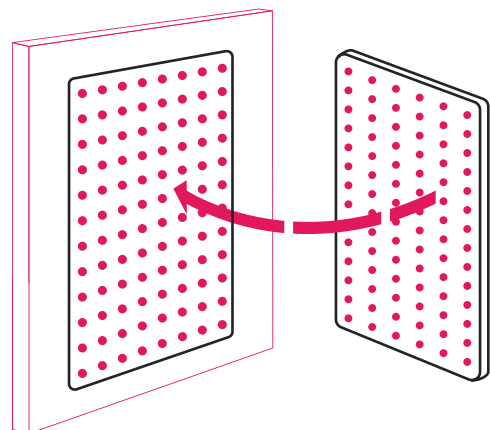
### Step 2:

Spray contact adhesive vertically onto the panels reverse surface and horizontally onto the desired installation area.



### Step 3:

After waiting for the adhesive to dry (2-5 minutes at 23°C) carefully align the panel to the marked area and push gently - allowing the clip spikes to bite into the panel. Once confident with the panel positioning, press firmly over the entirety of the surface and ensure maximum contact has been made with the wall.

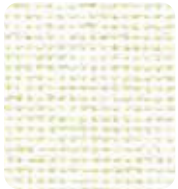




# Colours

MuffleWall can be purchased in its natural light grey colour or can be covered in a fabric facing. A broad range of fabric colours are available.

## CARA COLOUR RANGE



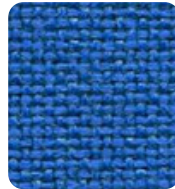
Vit EJ184



Glass EJ004



Dolphin EJ105



Galilee EJ125



Adriatic EJ154



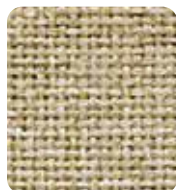
Inverness EJ175



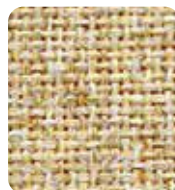
Lead EJ104



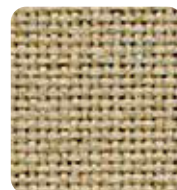
Spray EJ033



Lomond EJ192



Austen EJ173



Beltane EJ193



Shetland EJ191



Lossie EJ197



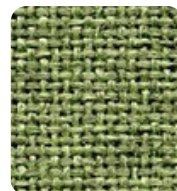
Tummel EJ038



Pitlochry EJ076



Maree EJ195



Fairisle EJ186



Staffa EJ185



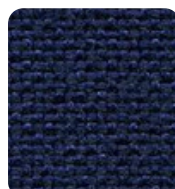
Lora EJ187



Ronay EJ189



Easdale EJ188



Walten EJ011



Portland EJ016



Merrick EJ048



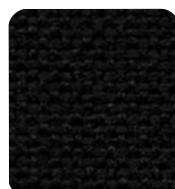
Chaucer EJ172



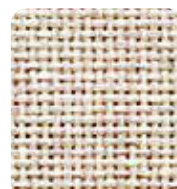
Hillswick EJ190



Denny EJ196



Black EJ138



Clan EJ169



Carron EJ015



Lerwick EJ194



Clunie EJ180

# Colours

## LUCIA COLOUR RANGE



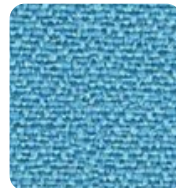
Adobo YB165



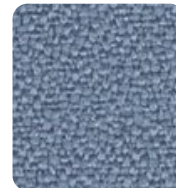
Martinique YB004



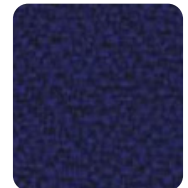
Bluebell YB097



Marianna YB157



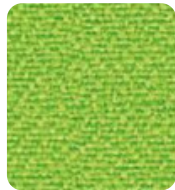
Steel YB095



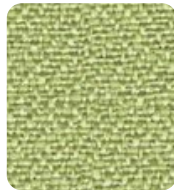
Ocean YB100



Campeche YB301



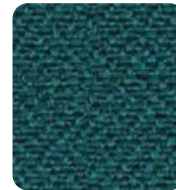
Madura YB156



Apple YB096



Windjammer YB047



Montserrat YB011



Paseo YB019



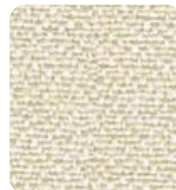
Rum YB086



Aruba YB093



Slip YB094



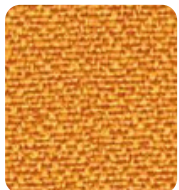
Oyster YB107



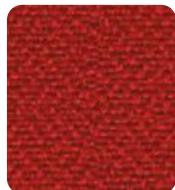
Blizzard YB108



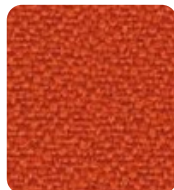
Buru YB170



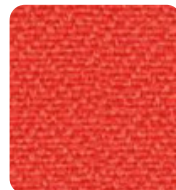
Solano YB088



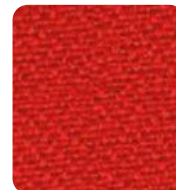
Calypso YB106



Lobster YB087



Tortuga YB168



Belize YB105



Bridgetown YB102



Sombrero YB046



Tarot YB090



Havana YB009



Sandstorm YB302



Tequila YB038



Scuba YB089



Costa YB026

# Product Care

## Delivery, Storage & Handling

Keep MuffleWall panels away from damp and moisture when storing and handling.

## After Care

Light dirt marks can be removed using a proprietary carpet spot cleaner. Before cleaning, we recommend testing a small area of the panel with the carpet cleaner to ensure the fabric is not adversely affected.

## Supplier

[za.muffleacoustics.com](http://za.muffleacoustics.com)

[hello.za@muffleacoustics.com](mailto:hello.za@muffleacoustics.com)

+44 (0) 1924 938911

Note: Product MUST be checked for colour shading differences, flaws, defects or damage prior to installation. Once installation has been commenced, the products are deemed to have arrived in perfect condition – any of the above reported after installation will not be covered by your warranty.