



Regupol®

TECHNICAL DATA SHEET

REGUPOL® E48 (E-FC-6)

HIGH PERFORMANCE SCREED ISOLATION FOR BEAM & BLOCK FLOORS

PRODUCT DESCRIPTION

Regupol® E48 is a recycled tyre crumb product designed to isolate screeds from the main structure of the building, reducing impact energy generated by general footfall.

Regupol® E48 offers enhanced acoustic performance at loads up to and including 30kN/m and having a dimpled surface on one side increases air movement, further aiding overall performance.

APPLICATIONS

Regupol® E48 has been developed to offer enhanced isolation and impact sound performance in:

- Apartments
- Hospitals
- Hotels
- Retail
- Schools

BENEFITS

- Robust Detail approval for beam & block floor **E-FC-6**
- Excellent impact and airborne performance
- Offers long term performance without collapse or “bottoming” out under high point loads
- Resistant to ageing and deformation
- Quick and easy to install with no need for separate perimeter strips
- Minimises construction heights
- Mildew and moisture proof
- Zero global warming potential (GWP) and zero ozone depletion potential (ODP)
- Product manufactured using Recycled Materials and 100% recyclable



PHYSICAL INFORMATION

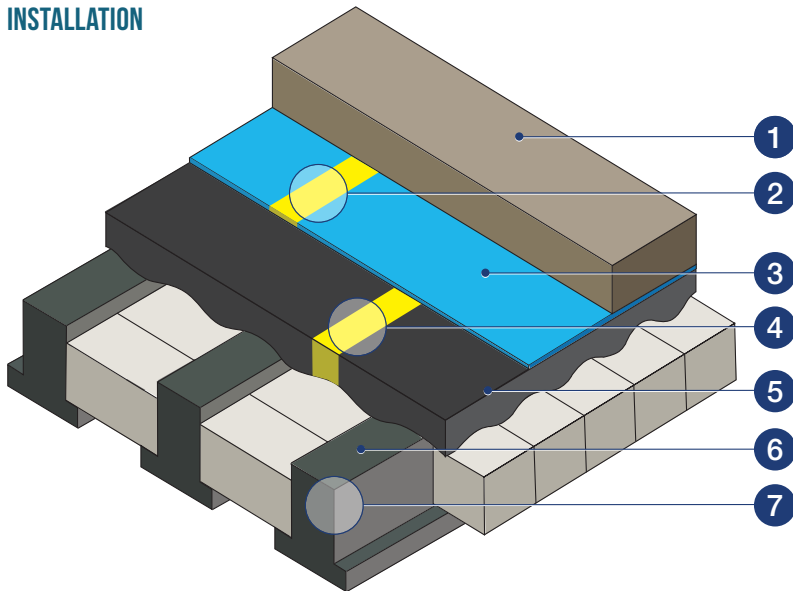
| | |
|--------------------|--------------------------------|
| Sheet length | 13m |
| Sheet width | 1.15m |
| Material thickness | 8mm nominal (dimpled one side) |

TECHNICAL INFORMATION

| | |
|---|--|
| Density | approx 600kg/m ³ |
| Tensile strength (DIN 53571) | approx 0.5N/mm ² |
| Thermal conductivity | approx 0.14W/mK |
| Elongation at break | approx 47% |
| Mean Value of Dynamic Stiffness | 47MN/m ³ |
| Maximum load bearing capacity | 3000kg/m ² (30kN/m ²) |
| Temperature resistance | -40°C to +110°C |
| Airborne sound insulation (DnT,w + Ctr) | 49dB (mean average) |
| Impact sound insulation (L'nT,w (Ci)) | *47dB (mean average) |
| Impact Improvement (ΔLw (Cld)) | 31dB |

* Based upon site testing for Robust Detail compliance in beam and block applications

INSTALLATION



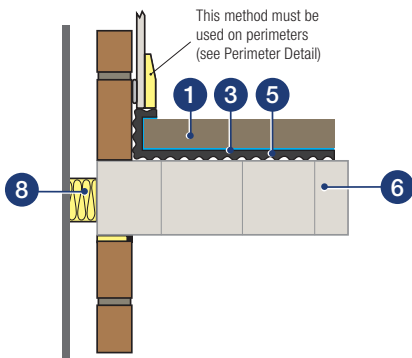
For example purposes only

- 1 65mm sand cement screed or minimum 40mm proprietary screed
- 2 Taped joint*
- 3 Minimum 500 gauge polythene sheeting
- 4 Joint detail**
- 5 Regupol® E48 8mm layer
- 6 Beam & Block floor, minimum 300kg/m²
- 7 Perimeter detail
- 8 Acoustic cavity closer
- 9 Hi-tack tape

* DPM overlap to be minimum 100mm

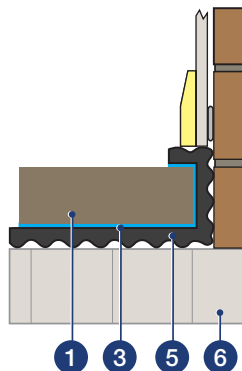
** For Proprietary Screeds

Ceiling View



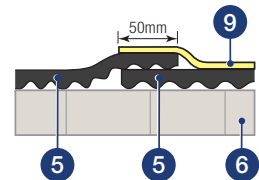
For example purposes only

7 Perimeter Detail



For example purposes only

4 Joint Detail - overlapped (Preferred method of installation)



For example purposes only

4 Alternative Joint Detail - butted

