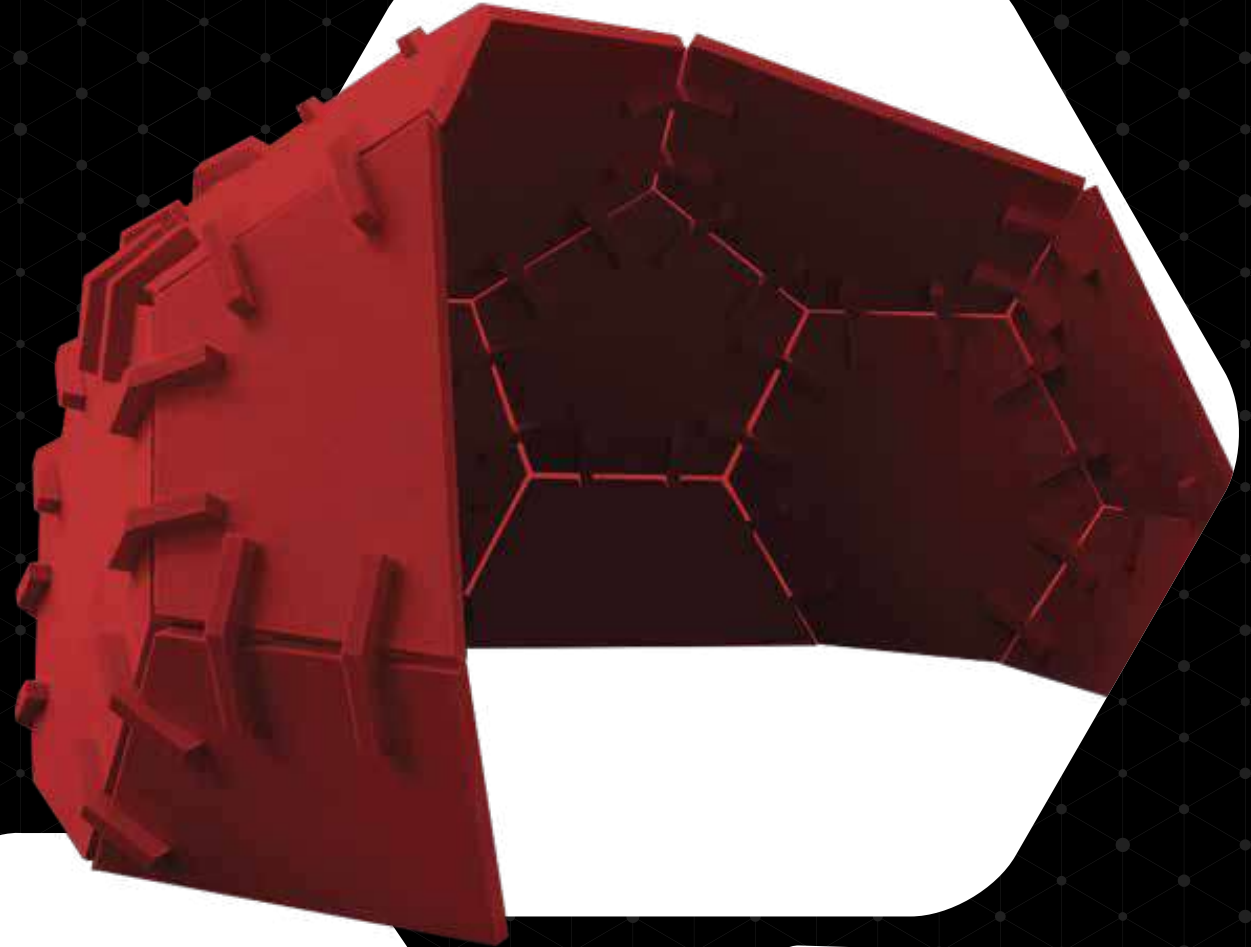


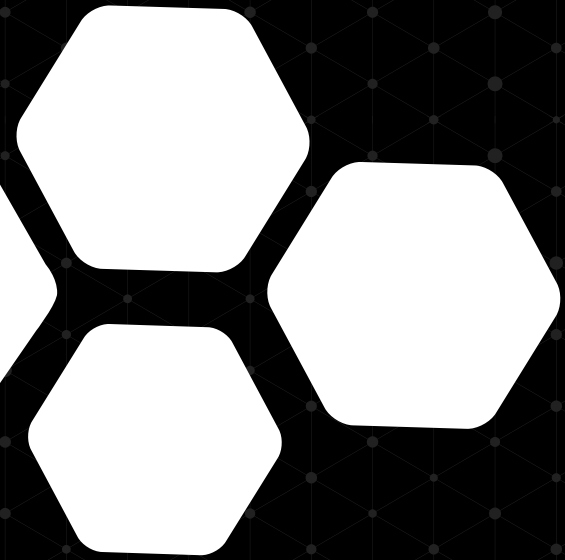
# HIDE

ASSEMBLY INSTRUCTIONS



1Six8

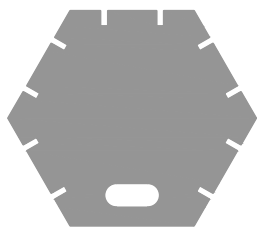
Designers of acoustic and **environmentally sustainable** office solutions



# HIDE

## ASSEMBLY INSTRUCTIONS

### COMPONENTS



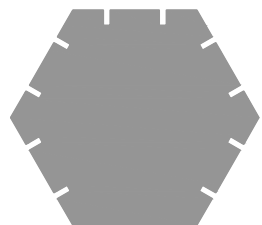
Hexagonal facet with  
cable cut out  
**x1**



3/6 Hexagonal facet  
**x2**



3/5 Pentagon facet  
**x2**



Hexagonal facet  
**x3**



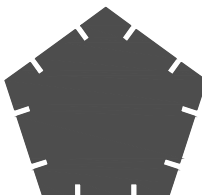
2/6 Hexagonal facet  
**x2**



Dihedral connectors  
**x54**



4/6 Hexagonal facet  
**x2**

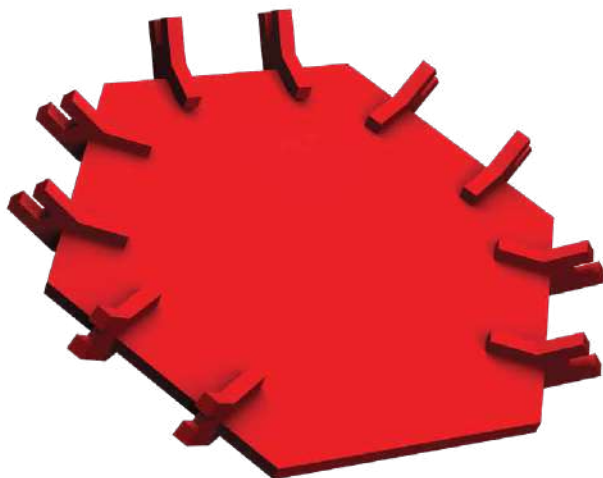


Pentagon facet  
**x2**

# HIDE

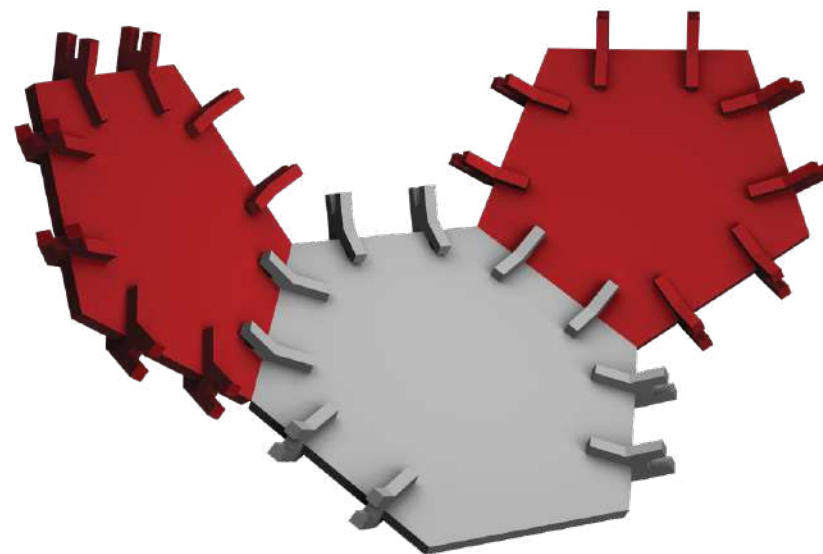
## ASSEMBLY INSTRUCTIONS

### STEP 1



- Hide will be assembled up side down.
- Insert dihedral connectors into hexagonal facet.
- Position the blank edge of the hexagonal facet facing forward.

### STEP 2



- Insert 2 pentagon facets as shown.
- Insert dihedral connectors into remaining friction slots of pentagons.

# HIDE

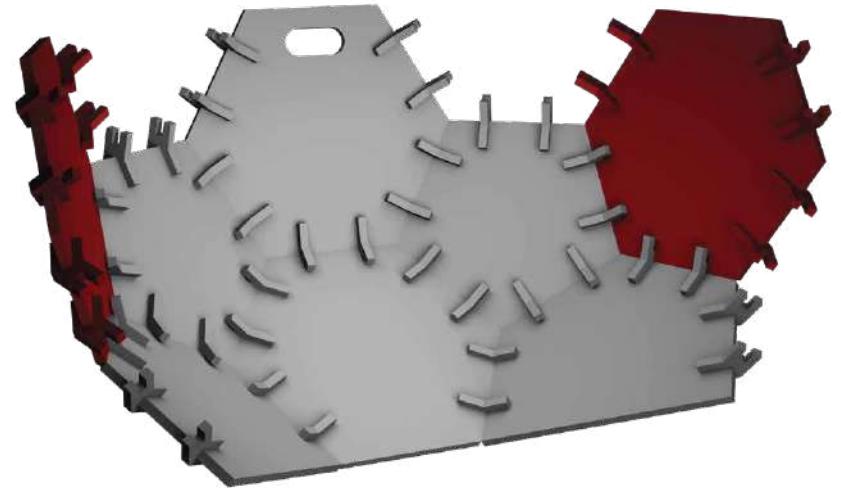
## ASSEMBLY INSTRUCTIONS

### STEP 3



- Insert hexagonal facet with cable cut out into position.
- Insert the two 4/6 hexagon facets into position.
- Insert dihedral connectors into remaining friction slots.

### STEP 4

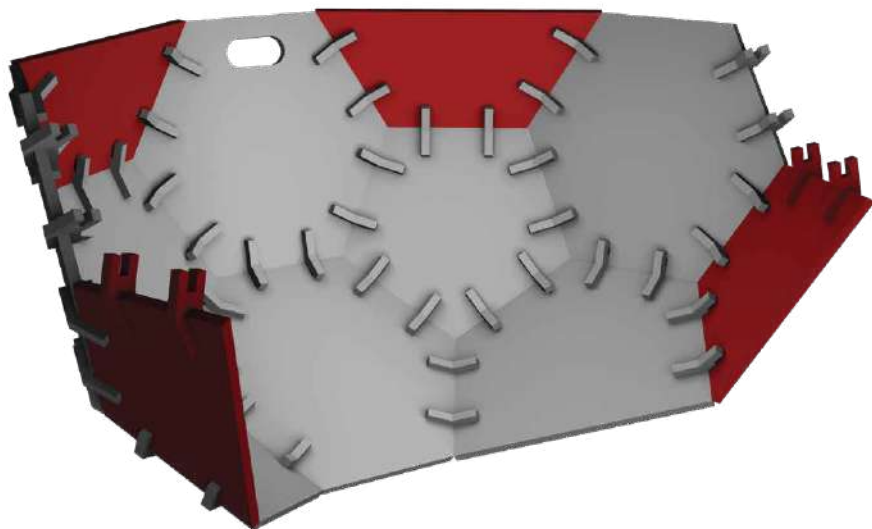


- Insert hexagonal facets into position as shown.
- Insert dihedral connectors into remaining friction slots.

# HIDE

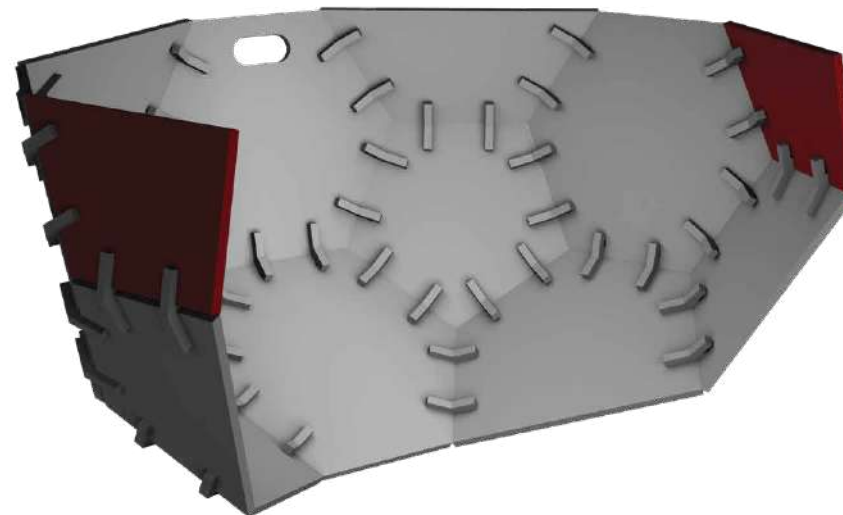
## ASSEMBLY INSTRUCTIONS

### STEP 5



- Insert the two  $\frac{3}{6}$  hexagonal facets into the back of Hide.
- Insert the two  $\frac{3}{5}$  pentagon facets into the front of Hide.
- Insert dihedral connectors into remaining friction slots.

### STEP 6



- Insert the two  $\frac{2}{6}$  hexagonal facets into position.

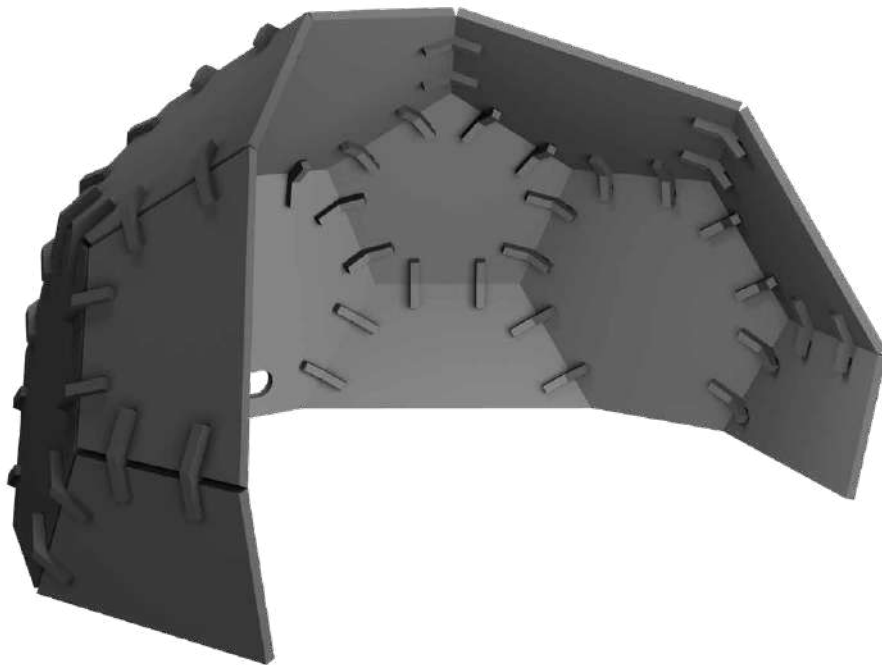
# HIDE

## ASSEMBLY INSTRUCTIONS

### NOTES

With the progression of the assembly there will be more connectors to deal with to when inserting the faces. Use the friction slot gaps to slide the face through into position and once the two opposing friction slots meet they can be pushed together.

Once the assembly is complete and all faces are in position flip over and push all faces nice and tightly together. There should be no gaps between edges.



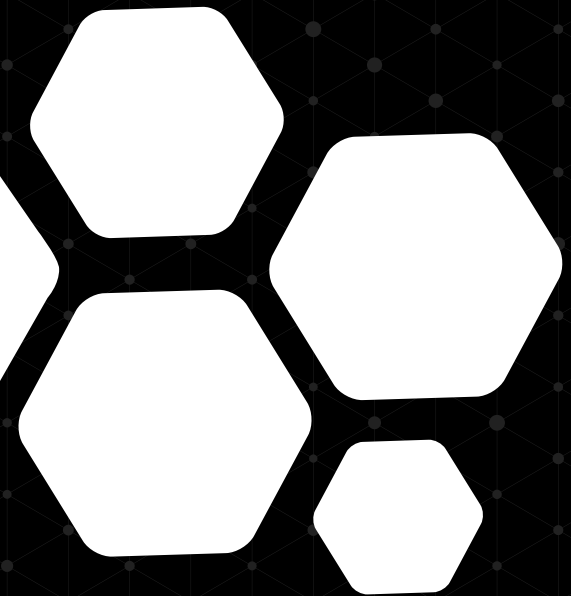
#### Sheet Thickness

12mm

#### Dimensions

520mm (h) x 750mm (dia)

# 14six8



# HIDE

ASSEMBLY INSTRUCTIONS

## Telephone

Francois: +44 7305 349443

Daniel: +27 82 331 8319

## Email

[studio@14six8.com](mailto:studio@14six8.com)

## Website

[www.14six8.com](http://www.14six8.com)

## Address

71-75, Shelton Street, Covent Garden,  
London, WC2H 9JQ, United Kingdom