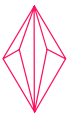




Styles



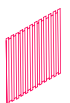
LINE



KITE



CONCAVE



STRIPE



WEAVE

MuffleCork

MuffleCork is a collection of environmentally friendly 3D wall panel made from recycled wine cork. With its natural sound absorbing qualities, these wall panels not only add to the décor but also act as an acoustic aid to your space. Thanks to their unique shape, MuffleCork panels can be arranged in many ways to create stunning designs.

Advantages:

- Sustainable design
- Made from recycled products
- Easy to install
- Stylish and modern
- Countless design combinations
- Natural sound absorbing material

Product Specifications

Weight

Kite - 150g Natural / 180g Colour
Line - 230g Natural / 250g Colour
Stripe - 230g Natural / 250g Colour
Concave - 300g Natural / 340g
Colour Weave - 150g Natural / 180g Colour

Acoustic Performance

MuffleCork panels are certified to PN-EN ISO 11654:1999, Class E.

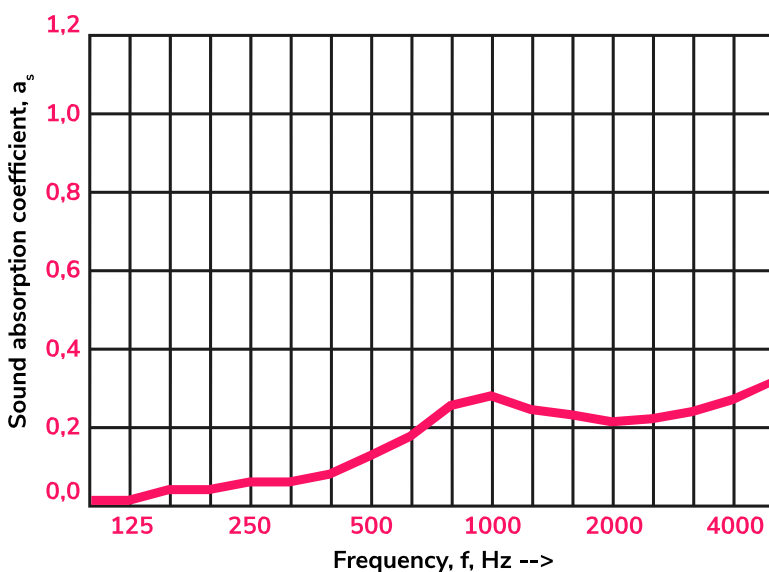
Fire

MuffleCork as standard is not fire rated however, all MuffleCork panels can now be fully flammability treated at factory to - BS 476 part 6+7 and ES EN 13501 EU standard. Simply get in touch to discuss this option.

Environmental

MuffleCork are environmentally friendly cork wall panels made of recycled wine cork. The cork naturally improves acoustics and is created without harm to the environment. Renewable, recyclable, and biodegradable.

f [Hz].	T _i [s]	T _e [s]	A _i [m] ²	a _s	a _p
100	5,5	5,4	0,1	0,01	
125	6,0	5,9	0,1	0,01	0,00
160	5,3	4,9	0,4	0,04	
200	5,3	5,6	0,4	0,04	
250	5,6	5,1	0,6	0,06	0,05
315	5,4	4,9	0,7	0,06	
400	5,5	4,8	0,9	0,08	
550	5,6	4,5	1,5	0,13	0,15
630	5,2	4,0	2,0	0,18	
800	4,9	3,4	2,8	0,28	
1000	4,6	3,2	3,0	0,28	0,25
1250	4,4	3,2	2,7	0,24	
1600	4,1	3,1	2,5	0,23	
2000	3,8	3,0	2,3	0,21	0,20
2500	3,4	2,7	2,4	0,22	
3150	2,8	2,3	2,6	0,24	
4000	2,3	4,9	3,0	0,27	0,30
5000	1,9	1,6	3,5	0,32	



Sound absorption index and class in accordance with EN ISO 11654:1999

a_w = 0,20

Sound absorption class: E

Product Variations



Kite

Panels to make up 1sq metre: 40
Thickness: 20mm – 30mm
Dimensions: 210 x 242 x 30 (mm)



Stripe

Panels to make up 1sq metre: 19
Thickness: 5mm – 10mm
Dimensions: 425 x 245 x 10 (mm)



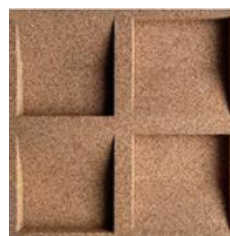
Line

Panels to make up 1sq metre: 19
Thickness: 5mm – 30mm
Dimensions: 425 x 245 x 30 (mm)



Weave

Panels to make up 1sq metre: 25
Thickness: 5mm – 15mm
Dimensions: 152 x 175 x 15 (mm)



Concave

Panels to make up 1sq metre: 16
Thickness: 25mm
Dimensions: 250 x 250 x 25 (mm)





Installation

Step 1

Prepare the wall panel for installation – ensure the surface is clean, dry, and void of bumps.

Step 2

Measure your wall space and then plan the arrangement of your cork panels.

Step 3

Using mounting glue, apply generous dabs evenly all over the back of the panel.

Step 4

Place the panel onto the wall in the desired location and hold in place for several seconds. Continue this process for each panel you're installing.

Tools Needed



Sandpaper with P120 grade



Glue



Snap-off blade knife



Level

Important

- Acclimatization Procedure:

Duration: Acclimatize the panels in the target room for a minimum of 48 hours before installation.

Location: Place the panels in the room where they are intended to be installed, rather than in a warm room. This ensures that the panels adjust to the specific environmental conditions of their final location.

Box Handling: Remove the panels from the collective box, allowing them to acclimate individually. Avoid keeping panels in small boxes within the collective box.

Before application, check that the panel is evenly aligned at each edge. If necessary, you can gently sand the edge to ensure the desired fit is achieved.

- Monitor the vertical and horizontal lines of the panels on an ongoing basis using a spirit level.
- If necessary, cut the cork panels with a snap-off blade knife.
- The mounting glue used should be strong and fast setting. We recommend using PinkGrip.

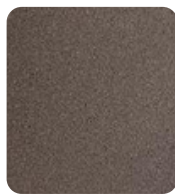
Colours



Black



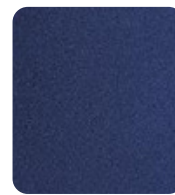
Blue



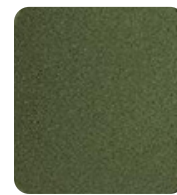
Brown



Dark
Green



Deep
Blue



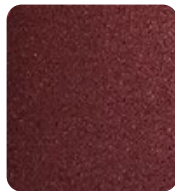
Green



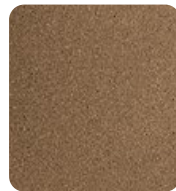
Grey



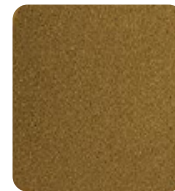
Ivory



Maroon



Natural



Yellow

Product Care

Delivery, Storage & Handling

Protect MuffleCork panels from excessive moisture when storing, and handling.

After Care

Little aftercare is needed with Mufflecork panels. Using a dry cloth, give the panels a light dusting to keep them looking clean and fresh.

Supplier

za.muffleacoustics.com

hello.za@muffleacoustics.com

+44 (0) 1924 938911

Note: Product MUST be checked for colour shading differences, flaws, defects or damage prior to installation. Once installation has been commenced, the products are deemed to have arrived in perfect condition – any of the above reported after installation will not be covered by your warranty.