

# CAT A Fabric

## Specifications

**Composition** 70% Recycled Wool, 25% Recycled Polyacryl,  
5% Recycled Other Fabrics  
**Weight** 405 g/m<sup>2</sup> | 11.94 oz/yd<sup>2</sup>  
**Width** 148 cm | 58.27"  
**Thickness** 0,8 mm | 0.031 inch  
**Abrasion resistance** 40.000 Martindale, 50.000 Wyzenbeek  
**Flammability** EU: EN 1021.1/2006 | BS EN 1021.1/2006 (cigarette)  
EN 1021.2/2006 | BS EN 1021.2/2006 (match)  
USA: CAL TB 117 | ASTM E84 CLASS A  
**Fastness to light** EU: 4 | USA: 4  
**Fastness to rubbing** EU: Wet 3-4 | Dry 4-5  
**Fastness to crocking** USA: Wet 5 | Dry 5



## Maintenance

Vacuum clean regularly. Don't wash. Don't remove the Fabric from the product.  
Treat spillages immediately. Professional dry clean or wipe clean with a pH neutral soap and a damp cloth.

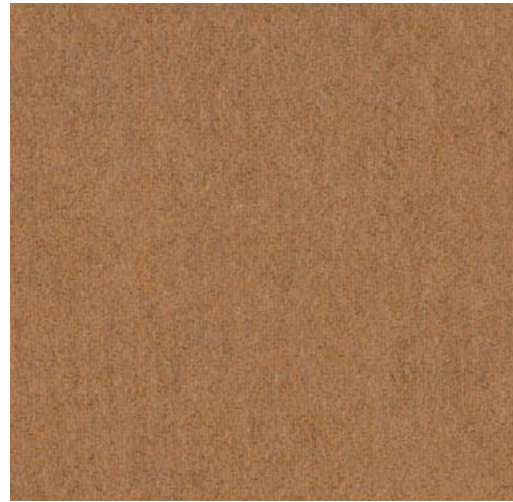


# CAT A Fabric

NO BOUNDARIES



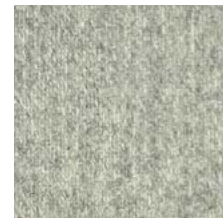
**Fabric**



FA-Camel 1056



FA-Kiesel 7



FA-Silver 57



FA-Ivory 101



FA-Naturel 1



FA-Beige 1037



FA-Dolphin 180



FA-Shitake 124



FA-DarkBrown 18



FA-Rust 29



FA-Taupe 1008



FA-Navy 1007



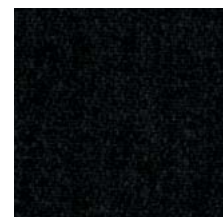
FA-Azure 144



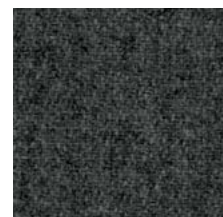
FA-Olive 53



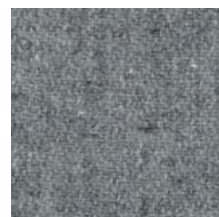
FA-Army 14



FA-Zwart 1003



FA-MidGrey 1001



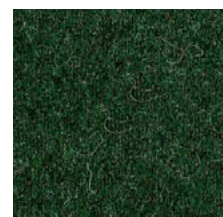
FA-LightGrey 1000



FA-Electric 16



FA-Mint 50



FA-Bottle 61

**Fabric**



FA-Jade 42



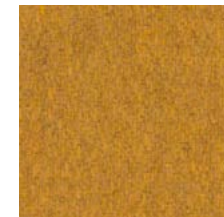
FA-Grass 59



FA-Pistache 52



FA-Yellow 24



FA-Mustard 63



FA-Orange 2012



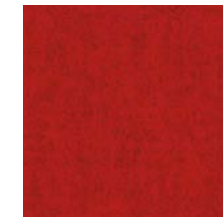
FA-Autumn 33



FA-Mandarin 129



FA-Red 2011



FA-Fire 139



FA-Purple 78



FA-Aubergine 74



FA-Nude 70

NEW



FA-Pink 73



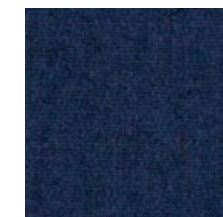
FA-Prune 76



FA-Fuchsia 77



FA-Violet 72



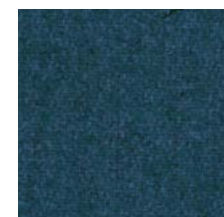
FA-Blue 45



FA-Indigo 90



FA-Lila 39



FA-Petrol 56



FA-Aqua 143



FA-OceanBlue 147



FA-LightBlue 41