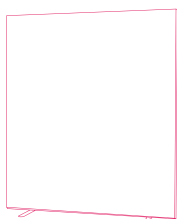




Styles



STRAIGHT

MuffleScreen

MuffleScreen acoustic screens introduce a simple yet effective way of settling down loud and busy environments. Designed primarily for offices and reception areas, MuffleScreen helps to absorb ambient background noise. By reducing reverberation levels, this helps to reduce the number of distractions caused by external and internal factors.

Advantages:

- Includes set of stabilising feet & 2 way link strip
- Finished with durable plastic edging
- Manufactured with an 18mm solid core
- 12mm acoustic foam on both sides
- Screen pressed under immense pressure to make it robust
- 5 Year Manufacture Guarantee

Product Specifications



Fire

- Foam** - 12mm Combustion Modified Foam BS 5852-2: using ignition Source 5 Crib
- Chipboard** - Surface spread of Flames Class 2 tested to BS479-7
- MDF** - Surface spread of Flames Class 2 tested to BS479-7
- Plastic Components** - Manufactured using non-flammable, self-extinguishing plastic.
- Steel** - Components are not considered to be a fire hazard.
- Fabric** - Woven Collection has been tested to BS 5867-2: 2008 & BS 7176 2007

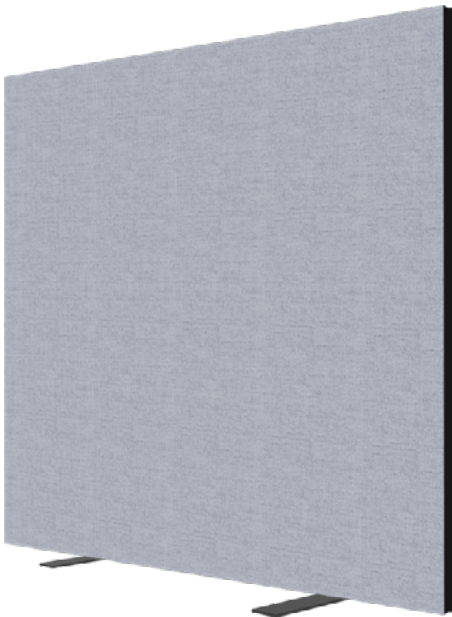


Weight

Weight varies per screen size. A screen size of 1800 x 1200 (mm) weighs 30kg for reference.

Product Dimension & Variation

MuffleScreen is designed to transform and separate workspaces to give multiple users their own individual privacy.

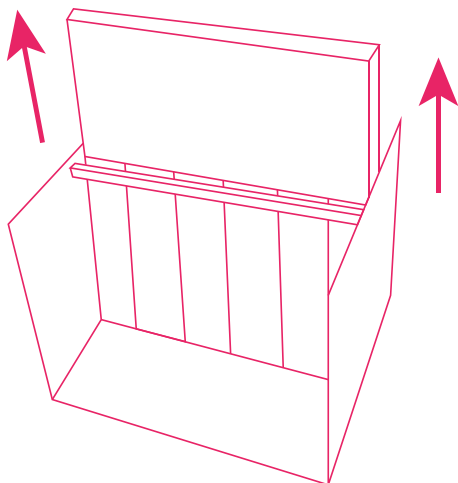


1200 x 800 x 42 (mm)	1600 x 800 (mm)	1800 x 800 (mm)	2000 x 800 (mm)
1200 x 1000 x 42 (mm)	1600 x 1000 (mm)	1800 x 1000 (mm)	2000 x 1000 (mm)
1200 x 1600 x 42 (mm)	1600 x 1200 (mm)	1800 x 1200 (mm)	2000 x 1200 (mm)
1200 x 1800 x 42 (mm)	1600 x 1600 (mm)	1800 x 1500 (mm)	2000 x 1600 (mm)
1200 x 2000 x 42 (mm)	1600 x 1800 (mm)	1800 x 1600 (mm)	
	1600 x 2000 (mm)		

Installation

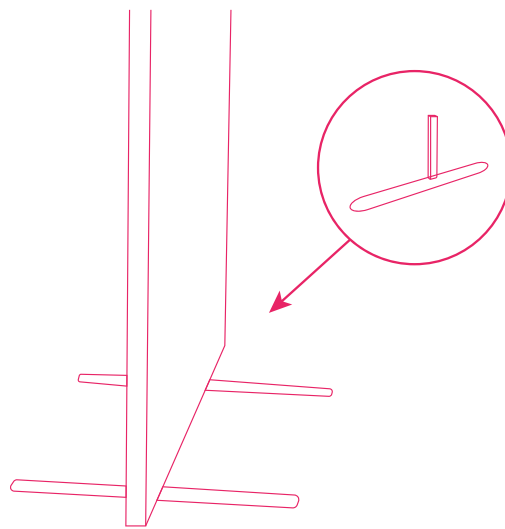
Step 1

Carefully remove the screens from their packaging.



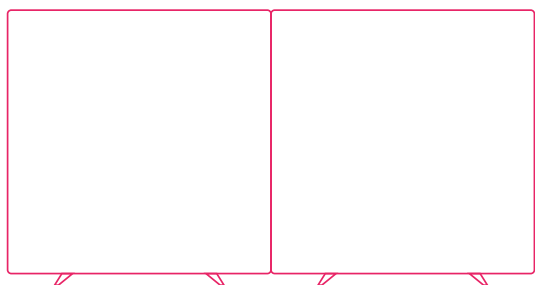
Step 2

Lay the screen down on a table to attach the feet. Push the foot into the square holes provided. You can then stand the screen up on the feet.



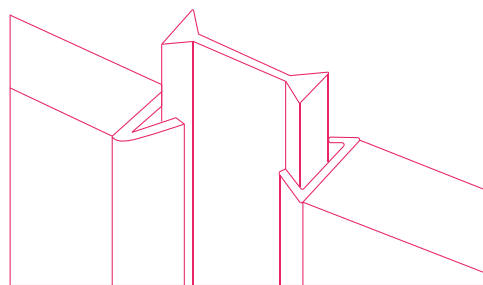
Step 3

When the feet are fitted, move into position and insert the linking strips if required.



Step 4

To insert the linking strip place the two screens together and slot the linking strip into the ending channel.



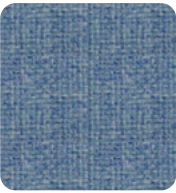
Colours



Black



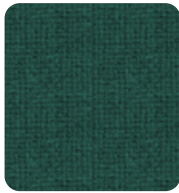
Chaucer



Crystal



Glass



Green



Grey



Soft Blue



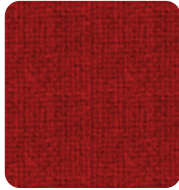
Marine Blue



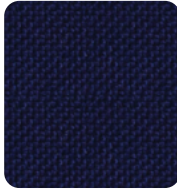
Medici Blue



Purple Drift



Red



Royal Blue



Ruby

Product Care



Delivery, Storage & Handling

Protect your MuffleScreen panels from excessive moisture when storing and handling.



After Care

Using a dry cloth, give the panels a light dusting to keep them looking clean and fresh.

Supplier

muffle.co.uk

info@muffle.co.uk

01924 938 911

Note: Product MUST be checked for colour shading differences, flaws, defects or damage prior to installation. Once installation has been commenced, the products are deemed to have arrived in perfect condition – any of the above reported after installation will not be covered by your warranty.