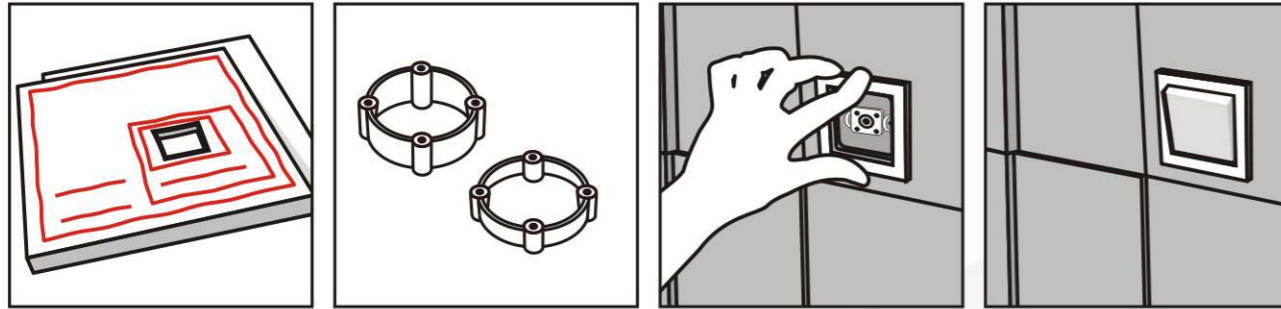


#### 6. Light switches and electric sockets

The electric sockets and light switches should be mounted on the panel. Mark the place where the switch or socket is located and cut an opening smaller by 1 cm in diameter, apply generous amount of adhesive around the opening, glue the panel to the surface, and fix the body of the socket firmly pressing it to the panel.

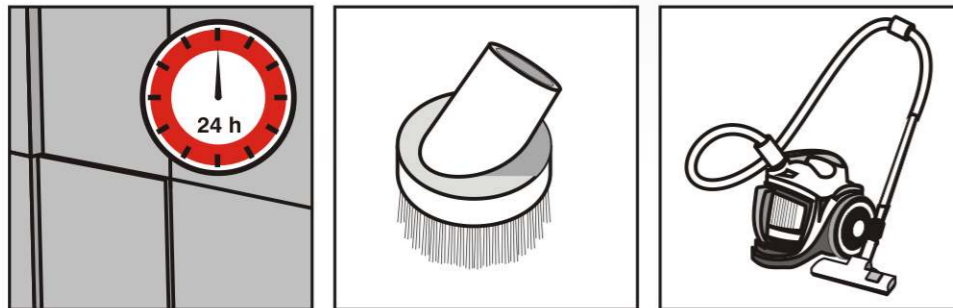


Should the socket or light switch be located in the place where the panel is over 3cm thick, please make sure to use a suitable distance for the socket container (available in any home improvement or construction store).



#### 7. Leave the panels to dry and vacuum.

Allow for the adhesive to dry completely (24h), then vacuum the panels with a clean, soft upholstery brush.



#### Directions for use:

##### Directions for use:

1. The panels should not be exposed to direct, intense sun light. After some time in such conditions colours might fade and discolorations may appear.
2. The panels should be mounted away from open flame, sparks and other heat sources for example electric heaters.
3. The panels should not be installed in venues with high humidity due to the retentive nature of the foam they are made of.
4. The foam may react with strong oxidizing agents (strong acids).
5. Be careful not to damage the panels with sharp objects, edges or corners of furniture.
6. Avoid staining the panels.
7. The panels should be installed out of the reach of pets – the foam is not intended for consumption.

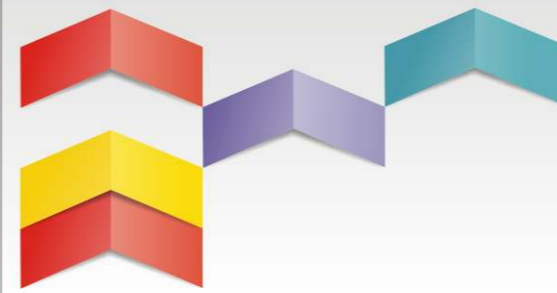
##### Cleaning and care instructions:

1. In order to remove dust, use a soft brush or a vacuum cleaner with a standard brush for upholstered furniture.
2. Lightweight stains can be removed with a soft sponge slightly moistened with water and diluted detergent. When cleaning please wipe the whole panel surface, so that you don't leave rubbing traces in one spot.
3. You can also refresh the panels. Before you start, please vacuum the panels accurately, then mist spray the panels. Wait 2 min, then wipe the panels with a dry sponge.

**FLUFFO**  
fabryka miękkich ścian

Should you have any questions or concerns please contact us:

☎ 502 552 392  
✉ fluffo@fluffo.pl



# FLUFFO

fabryka miękkich ścian



## SOFT WALL PANELS MOUNTING INSTRUCTION

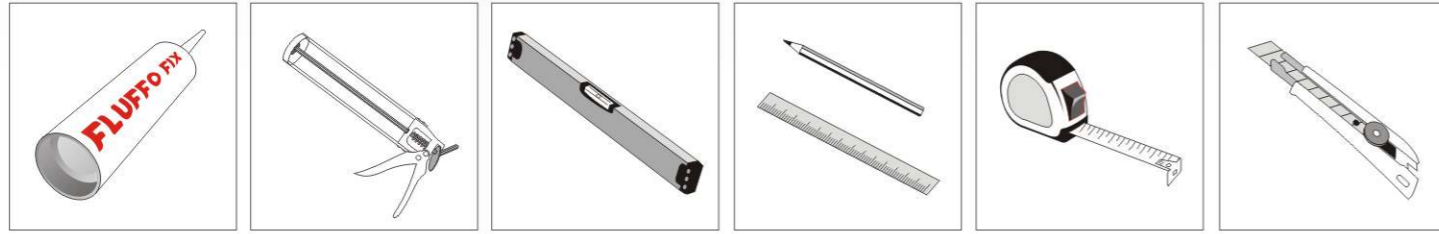
[www.fluffo.pl](http://www.fluffo.pl)

Thank you for choosing the Fluffo soft wall panels.  
The installation of our panels is simple, quick and clean.  
You can do it yourself easily, just follow these instructions.

## Preparation

A day before the installation take the Fluffo soft wall panels out of their package. Lay them out on the floor loosely, in a way so they do not squash one another. Dozen or so hours will allow for any dents, which might have appeared during transportation, to smooth out.

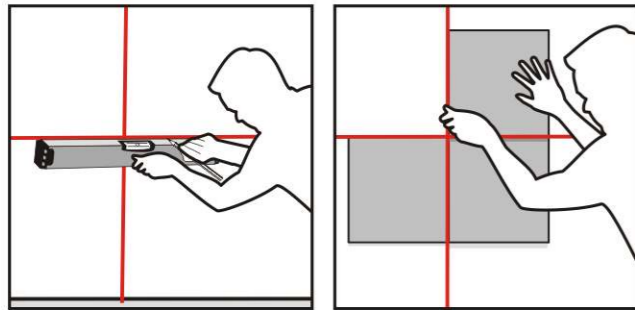
**Prepare:** the Fluffo Fix adhesive, cartridge applicator gun, bubble level, metal ruler, pencil, measuring tape, utility knife.



## Installation

### 1. Draw the start lines.

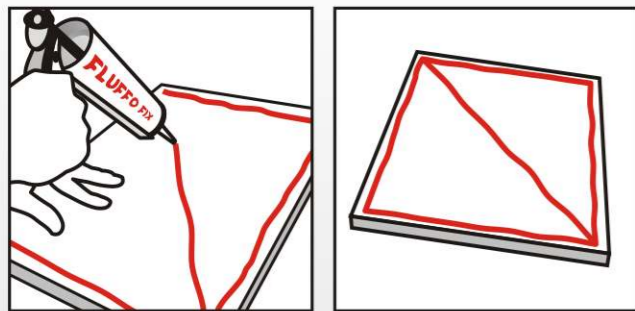
Mark the start lines from which you will begin the installation. Should the panel composition be symmetric – fix the centre line in the middle and begin the installation from this line.



- Fluffo panel dimensional tolerance is +/- 3mm. In order to achieve a symmetrical wall panel arrangement begin the installation from the centre line.
- Fluffo Fix contains a special penetrating agent, thus there is no need for special wall preparation before panel installation. Just make sure that the wall is relatively even and free of dust.

### 2. Apply adhesive

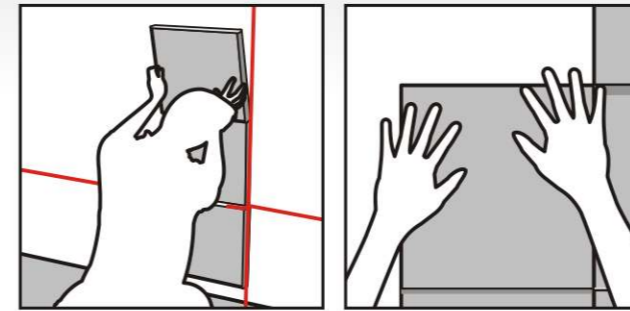
Apply a thin strip of the adhesive on the outline of the panel 2 to 3 mm from the edge. Additionally, especially on the larger panels put a strip of the adhesive in the middle of the panel.



- The adhesive should be at room temperature. Should the cartridge be cold, put it in warm water for a few minutes.
- Cut the cartridge applicator at an angle, about 2 cm from its tip. This will allow for a wide strip of adhesive.
- To apply the adhesive to the panel press the tip of the applicator to it and slowly move it along the outline, simultaneously extruding the adhesive.
- The layer of the adhesive should not be too thick. Should it be too thick distribute it with a spatula or utility knife.
- Avoid staining the surface of the panel with the adhesive. Should you get some adhesive on the panel wipe it away as soon as possible. Do not allow for the adhesive to dry - scraping it off may damage the panel surface.
- We don't recommend to glue the panels to one another.

### 3. Glue the panel

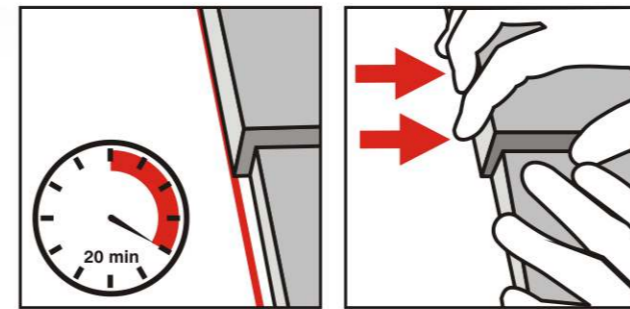
Place the panel on the wall, then apply light pressure with your hand in places where the adhesive was used.



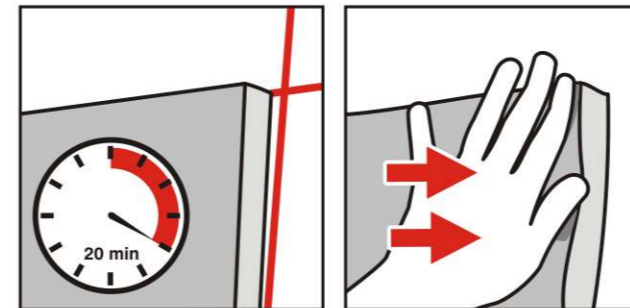
- The adhesive has a high initial bonding, thus Fluffo panels will not fall off the wall during the installation.
- You can glue our panels to virtually any surface when using Fluffo Fix adhesive, installation on the ceiling will not be a problem.
- Initially fix several adjacent panels and then begin to adjust their fit to one another.

### 4. Adjust the fit

After you mount some of the panels you should adjust their fit, so that there are no gaps or empty spaces between them. The most effective way to do that is to match them: press the panel firmly with your hand and move it to the adjacent panel.

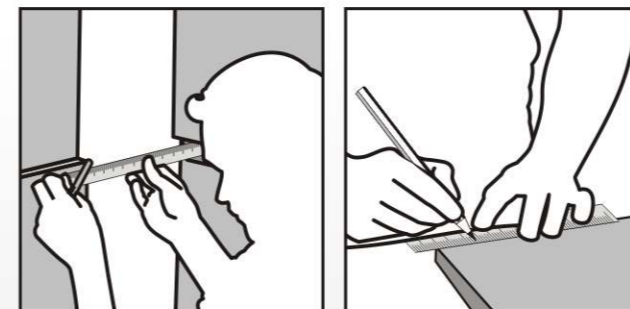


- You have about 20 to 40 min to adjust the panels, the time depends on the temperature and humidity of the interior.
- The panels are produced from a flexible foam, which can be "stretched" or "squeezed" when needed. Thus you will be able to adjust and match the panels perfectly.



### 5. Cutting the panels

Mark the cutting line on the coloured front side of the panel adding spare 2 to 3 mm. Put the metal ruler parallel to the line but do not press it too hard. Cut the panel on the front side.



- In order to cut the panels you can use a carpet or a wallpaper knife.
- First test the cut on a spare panel part.
- Remember that the cut will reveal the white structure of the foam, that is why we cut panels only in the case when the revealed edge will not be visible i.e. when it will be adjacent to the ceiling or the perpendicular wall.

